



UNIBLITZ

PRODUCT GUIDE

Version 2

About Us

What We Do

In 1969, Vincent Associates shipped the first Uniblitz® electronic shutter, and in the years since we have established ourselves as a leader in manufacturing electronic shutter systems for customers all over the world.



*Stephen Pasquarella
President, Vincent Associates*

For over 50 years, Uniblitz has been more than a brand. It has been a commitment to the quality, performance, and reliability that our customers rightfully expect from our unmatched products.

*Andrew Vincent's original shutter prototype,
c. 1965. (Shown left)*

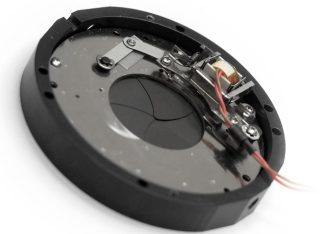


Uniblitz FS Series

All-New 25mm and 35mm Optical Shutters

Introducing the all-new Uniblitz FS series shutters: A high-value, high-performance optical shutter series designed and optimized to operate directly from +5VDC. These devices do not require a separate driver, and a simple control circuit can be used to operate them from a TTL trigger pulse.

For applications that require the remote operation of an FS shutter from a TTL signal or USB interface, the VLM1 Interface Module (shown right) is available.



Uniblitz FS25 in half-housed configuration.



Uniblitz VLM1 Interface Module.

The All-New MS150B

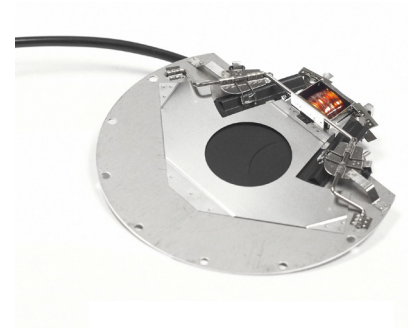
150 mm Optical Shutter (Now Available)

It's what you love about Uniblitz, but a whole lot bigger.

The MS150B large format optical shutter features an impressively large 150 mm aperture, making it suitable for telescopes or other large format imaging systems.

Legacy Shutters

For decades, Uniblitz VS, LS, and CS shutter systems have been used in optical systems ranging from space telescopes and satellites, to microscopes and video cameras.



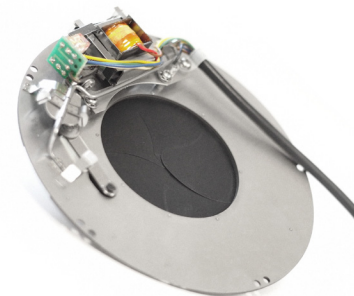
VS Series:

- VS14, VS25, and VS35
- Successfully field tested in microscopy, video imaging, PMT protection, and photographic applications worldwide.



LS Series:

- LS2, LS3, and LS6
- Ideal for precision exposure control, laser switching, low level laser chopping, etc.
- Lightning fast opening time.
- Unhoused version available



CS Series:

- CS25, CS35, CS45, CS65, and CS90
- Designed to provide accurate, reliable exposures for microscopy, video imaging, telescopes, and more.
- Streamlined integration for OEM.



Uniblitz ES6B

A 6mm low-profile laser shutter with a 25,000,000 actuation guarantee.

The Uniblitz ES6B is a 6mm bi-stable laser shutter with a very low-profile construction and guaranteed lifetime of 25,000,000 actuations. Its lack of an external protruding actuator makes it very slim and flexible for system integration. Precision exposure control and laser switching are applications that benefit greatly from the precise, highly repeatable characteristics of the ES shutter series.

NS & DSS Series Shutters

The Uniblitz NS and DSS series are among the next generation of performance shutter systems. These low-profile devices feature few moving parts and are highly repeatable.

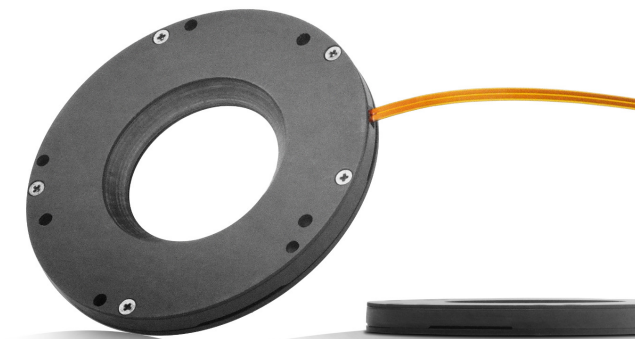


NS Series:

- NS25B, NS35B, NS45B, NS65B
- NS Series shutters are slim, fast, and flexible.
- Their simple designs provide maximum clearance around their apertures, and machined flat surfaces make for shutters that are very suitable for OEM integration.

DSS Series:

- DSS10B, DSS25B, DSS35B
- The DSS series shutters have completely eliminated externally-protruding actuators and contain no other interfering components. This makes for extremely low-profile shutters capable of fitting into very tight spaces.



XRS Series

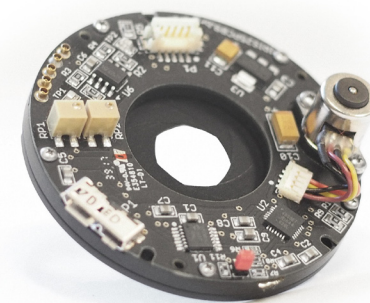
High-performance x-ray switching.

Shutter devices for X-ray imaging systems are designed with application-specific attributes, such as blade material and/or vacuum compatibility. XRS series shutter systems are designed to achieve tenth-value X-ray extinction at 30 keV (standard), which is suitable for high-speed X-ray switching.

Uniblitz AI25 and AIC10

1.5 - 25 mm Auto Iris and Iris Controller

The Uniblitz AI25 (shown right) is a motorized/auto iris diaphragm that allows for the remote control of a variable 25mm aperture, ideal for remote light attenuation or depth-of-field control. The optional shutter attachment allows users to fully close the aperture.



The AIC10 Iris Controller (shown left) features an intuitive button array and digital user interface, allowing it to operate the iris via a modified serial command protocol.

A shuttering solution for your application.

Microscopy

In applications where the control of a microscope's light source(s) is required, certain Uniblitz shutter devices can be utilized for fast, precise switching. Such sources may include fluorescence and/or transmitted (bright-field) light.

Infrared Imaging

The reliability of a shutter device is crucial in infrared imaging applications, and Uniblitz shutters provide this reliability. Additionally, total light extinction from the shutter is needed for NUC (Non-Uniformity Correction) calculations in thermal imaging devices, where calibration to a black reference is necessary. *Image courtesy of NASA Goddard Space Flight Center.*

High Vacuum

Many Uniblitz shutters can be used within vacuum applications where vacuum levels reach $10E-10$ Torr.

Laser Systems

Uniblitz laser shutters are designed to enable pulse selection and can accommodate high-speed laser switching, and their response times are unmatched.

PICARD Satellite

PICARD satellite utilizing the Uniblitz VS35 35mm shutter. The satellite's mission involved observing the sun and its effect on Earth's climate. *Image courtesy of CNES.*

High-Speed Imaging

Stinging wasp photographs taken using the Uniblitz VS25 25mm shutter. *Image courtesy of Professor Andrew Davidhazy.*

Vega Space Probes

Photo of Halley's Comet as taken by the Vega 2 Probe. The probe housed a Uniblitz VS25 25mm shutter. *Image courtesy of CNES.*

temperatures of the Arctic to the vacuum of outer space. With over 50 years of serving the industry, we know that there's a trusted Uniblitz shutter for your application.

Driving Uniblitz Shutters

Our state-of-the-art selection of shutter controllers are best suited for driving Uniblitz shutter systems. Whether it's a flexible board-level controller or a lab-ready tabletop driver, we'll be sure to keep your project moving.

VCM-D1

For over 15 years, the Uniblitz VCM-D1 has been providing high performance shutter control. This single-channel, uni-stable shutter driver is versatile and proven.

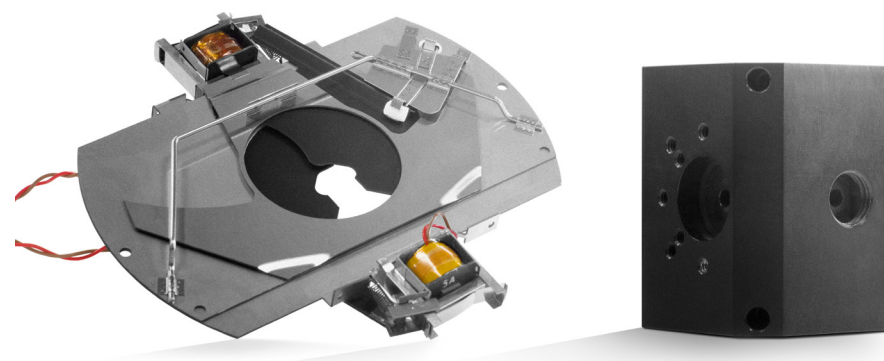
VED24

The VED24, or Versatile Electronic Driver, provides simple, straightforward shutter control in a compact package. The device is single-channel, and is compatible with almost every Uniblitz shutter device.

Custom Capabilities

We pride ourselves on our ability to offer shuttering solutions to all of our customers, no matter their application or situation. If you can't find specifically what you need among our standard products, rest assured knowing our custom capabilities are the most versatile in the industry.

From alternative shutter blade coatings to completely custom product designs, we will strive to make a Uniblitz shutter system work for you.



Contact Us

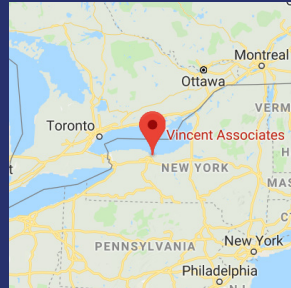
Vincent Associates

Tel: +1 (585) 385-5930

Website: www.uniblitz.com

Email: c.courtois@polytec.fr

803 Linden Ave. Rochester, NY, 14625



Notes

Global Representatives

France

Polytec

Tel: +33 (0) 1 49 65 69 00

www.polytec.com

c.courtois@polytec.fr



VINCENT

— ASSOCIATES —

**Over 50 years of industry-leading
shuttering solutions.**