

Single Bundles

Flexible bundles give the user versatility when routing and positioning light.

- Variety of standard sizes with tight bending radius for easy routing
- Standard output ferrules accept spot lenses and polarizing caps (See the Accessories section)
- Standard input accepts Dichroic color filters, diffusers and ColdVision Series light sources
- Support products are available in the Support Apparatus section of the product catalog
- Modified standard and custom configurations are available



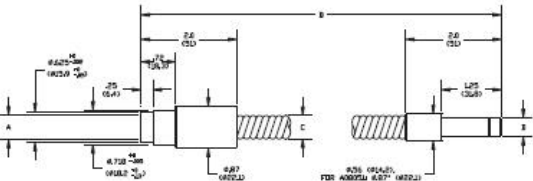
Single Bundle, A08031.60

Single Bundles

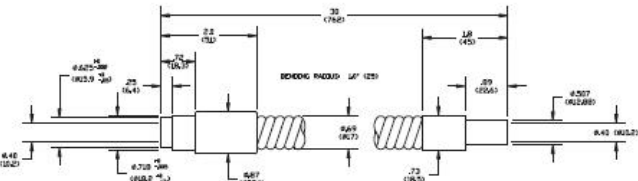
Dimensions in () are in mm

Bundle Input: Black Anodized Aluminum
Bundle Sheathing: PVC Covered Metal Tubing

Warning : This product is manufactured with glass fiber. Not for use in cable/hose carrier. Call MORITEX to discuss moving cable/hose carrier applications.



A08020.40 - A08051.60
Single Bundles



A21200 Bundle

Bundle

Part No.	Active Input Fiber Diameter	Distal Ferrule Diameter	Tubing Diameter	Bundle Length
A08020.40	.20" (5)	.393" (10)	.39" (10)	40" (1016)
A08020.60	.20" (5)	.393" (10)	.39" (10)	60" (1524)
A08025.40	.25" (6)	.393" (10)	.47" (12)	40" (1016)
A08025.60	.25" (6)	.393" (10)	.47" (12)	60" (1524)
A08031.40	.30" (8)	.393" (10)	.47" (12)	40" (1016)
A08031.60	.30" (8)	.393" (10)	.47" (12)	60" (1524)
A08031.80	.30" (8)	.393" (10)	.47" (12)	80" (2032)
A08051.40	.51" (13)	.625" (16)	.75" (19)	40" (1016)
A08051.60	.51" (13)	.625" (16)	.75" (19)	60" (1524)
A21200	.40" (10)	.507" (13)	.69" (18)	30" (762)

Dimensions in () are in mm

Matrix for A08020.40 - A08051.60 Bundles

Part No.	A	B	C	Bend Radius	D
A08020.40	.20" (5)	40" (1016)	.39" (10)	.5" (13)	.393" (10)
A08020.60	.20" (5)	60" (1524)	.39" (10)	.5" (13)	.393" (10)
A08025.40	.25" (6)	40" (1016)	.47" (12)	.6" (15)	.393" (10)
A08025.60	.25" (6)	60" (1524)	.47" (12)	.6" (15)	.393" (10)
A08031.40	.30" (8)	40" (1016)	.47" (12)	.6" (15)	.393" (10)
A08031.60	.30" (8)	60" (1524)	.47" (12)	.6" (15)	.393" (10)
A08031.80	.30" (8)	80" (2032)	.47" (12)	.6" (15)	.393" (10)
A08051.40	.51" (13)	40" (1016)	.75" (19)	1.4" (36)	.625" (16)
A08051.60	.51" (13)	60" (1524)	.75" (19)	1.4" (36)	.625" (16)
A21200	.40" (10)	30" (762)	.69" (18)	1.0" (25)	.507" (13)

Dual and Quad Bundles

Flexible bundles give the user versatility when routing and positioning the light.

- Variety of standard sizes and bundle furcations with tight bending radius for easy routing
- Multi-leg bundles are illuminated with one light source
- Standard output ferrules accept spot lenses and polarizing caps (See the Accessories section)
- Standard input accepts Dichroic color filters, diffusers and ColdVision Series light sources
- Support products are available in the Support Apparatus section of the product catalog
- Modified standard and custom configurations are available



Quad Bundle, A08545



Dual Bundle, A08550.72

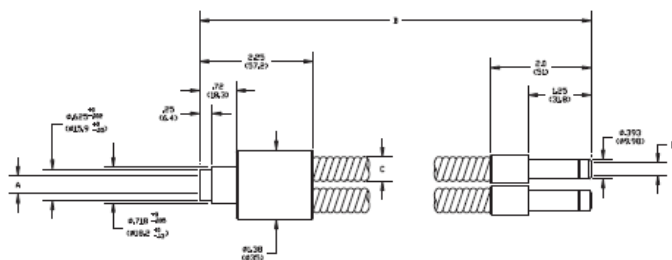
Dual and Quad Bundles

Dimensions in () are in mm

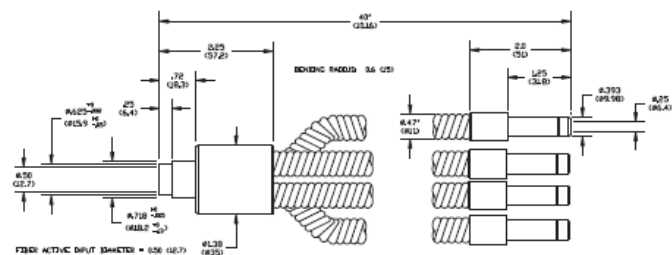
Bundle Input: Black Anodized Aluminum

Bundle Sheathing: PVC Covered Metal Tubing

Warning : This product is manufactured with glass fiber. Not for use in cable/hose carrier. Call MORITEX to discuss moving cable/hose carrier applications.



A08530 - A08550.72 Dual Flexible Bundles



A08545 Quad Flexible Bundles

Dual and Quad Bundles

Part No.	Active Input Fiber Diameter	Distal Ferrule Diameter	Tubing Diameter	Bundle Length
Dual Bundles				
A08530	.30" (8)	.393" (10)	.40" (10)	40" (1016)
A08540	.36" (9)	.393" (10)	.47" (12)	40" (1016)
A08550	.43" (11)	.393" (10)	.47" (12)	40" (1016)
A08550.72	.43" (11)	.393" (10)	.47" (12)	72" (1829)
Quad Bundles				
A08545	.50" (13)	.393" (10)	.47" (12)	40" (1016)

Dimensions in () are in mm

Matrix for A08530 - A08550.72 Dual Bundles

Part No.	A	B	C	Bend Radius	D
A08530	.30" (8)	40" (1016)	.40" (10)	.5" (13)	.21" (5.3)
A08540	.36" (9)	40" (1016)	.47" (12)	.6" (15)	.25" (6.4)
A08550	.43" (11)	40" (1016)	.47" (12)	.6" (15)	.30" (7.6)
A08550.72	.43" (11)	72" (1829)	.47" (12)	.6" (15)	.30" (7.6)

Randomized and Calibrated Bundles

Designed to increase uniformity of light output for Machine Vision applications.

- Fibers are randomized to improve spot uniformity, bundles with multiple outputs are calibrated for matching output within ~5% bundle to bundle
- We assure consistency by adding a 12" (305mm)* randomized common end at the input. This extra 12" (305) of fiber scrambles the light, distributing any hot or cold spots from the lamp throughout each of the legs.
- Variety of standard sizes and bundle furcations with tight bending radius for easy routing (see chart)
- Multi-leg bundles are illuminated with one light source
- Standard output ferrules accept spot lenses and polarizing caps (See the Accessories section)
- Modified standard and custom configurations are available



Quad Randomized and Calibrated Bundle, A21045



Single Randomized Bundle, A08031.40R



Single Bundle, A08031.60R

Randomized and Calibrated Bundles

Part No.	Configuration	Active Input Fiber Diameter	Distal Ferrule Diameter	Tubing Diameter	Bundle Length
Randomized Bundles					
A08031.40R	Single	.30"(8)	.393" (10)	.47" (12)	40" (1016)
★ A08031.60R	Single	.30"(8)	.393" (10)	.47" (12)	60" (1524)
★ A08031.80R	Single	.30"(8)	.393" (10)	.47" (12)	80" (2032)
Randomized and Calibrated Bundles - 12"(305) Common Bundle Length					
A21040	Dual	.36" (9)	.393" (10)	.60" (15)	48" (1219)
A21045	Quad	.51" (13)	.393" (10)	.83" (21)	48" (1219)
A21050	Dual	.43" (11)	.393" (10)	.67" (17)	48" (1219)

Dimensions in () are in mm

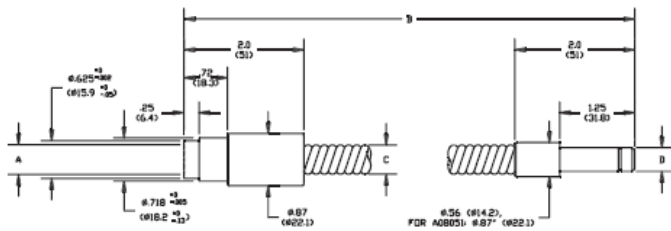
★ Made-to-order products.

Randomized and Calibrated Bundles

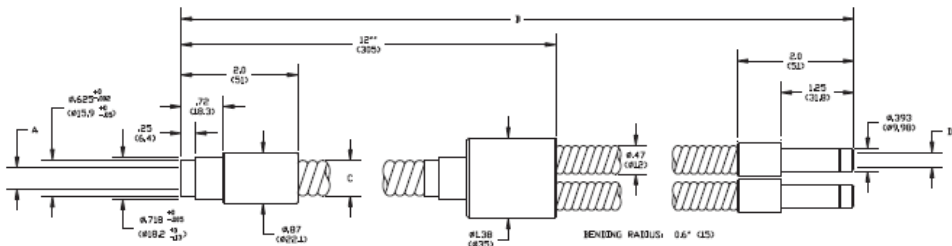
Dimensions in () are in mm

Warning : This product is manufactured with glass fiber. Not for use in cable/hose carrier. Call MORITEX to discuss moving cable/hose carrier applications.

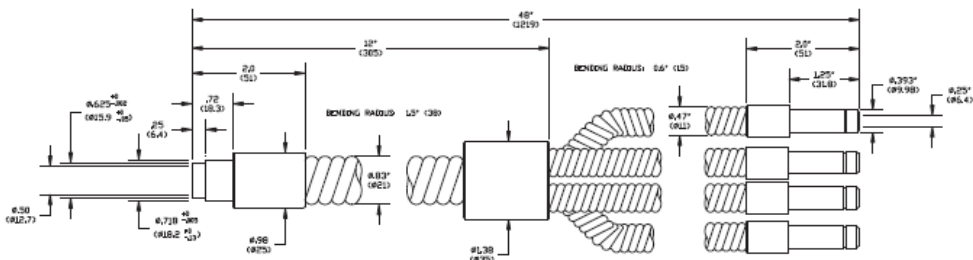
Bundle Input: Black Anodized Aluminum
Bundle Sheathing: PVC Covered Metal Tubing



A08031.40R - A08031.80R
Single Randomized Bundles



A08545
Quad Flexible Bundles



A21040 & A21050
Dual Randomized &
Calibrated Bundles

Matrix for A08031.40R - A08031.80R

Part No.	A	B	C	Bend Radius	D
A08031.40R	.30" (7.6)	40" (1016)	.47" (12)	.6" (15)	.393" (10)
A08031.60R	.30" (7.6)	60" (1524)	.47" (12)	.6" (15)	.393" (10)
A08031.80R	.30" (7.6)	80" (2032)	.47" (12)	.6" (15)	.393" (10)

Matrix for A21040 & A21050

Part No.	A	B	C	Bend Radius	D
A21040	.36" (9)	48" (1219)	.60" (15)	1.0" (25)	.25" (6.4)
A21050	.43" (11)	48" (1219)	.67" (17)	1.2" (30)	.30" (7.6)

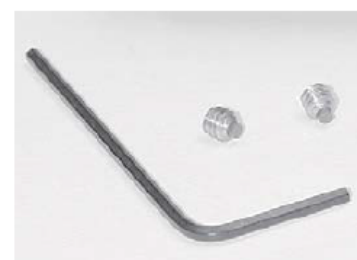
Bundle Extenders

Extend the working length of standard fiber optic components using a SCHOTT bundle and these couplers.



Bundle Extender, A08035

- Reduces the requirement for custom fiber optic lengths, can provide the user with additional work space
- Extends length of all standard SCHOTT ringlights, bundles, goosenecks, lightlines, and backlights* that have a .310" (8) or .510" (13) active fiber diameter (see chart)
- Black anodized aluminum with nylon tipped set screws



Bundle Extender Nylon Tipped Set Screws

PLEASE NOTE:

- * Using a bundle extender results in a 30-40% light loss. If your application requires maximum intensity, we recommend ordering a modified standard component.
- * Backlight adapter, part number A08931 is required in order for the bundle extender to be used with SCHOTT standard backlights

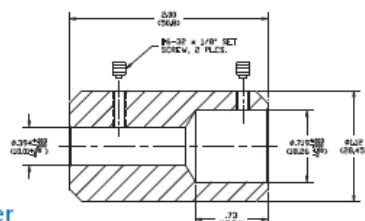
Bundle Extender

Bundle Extender Part No.	Single Bundle Part No.
A08035	A08031.40
	A08031.60
	A08031.80
	A08031.40R
	A08031.60R
A08055	A08031.80R
	A08051.40
	A08051.60

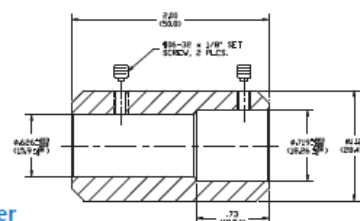
Bundle Extenders

Dimensions in () are in mm

A08035
Bundle Extender



A08055
Bundle Extender



Single and Dual Goosenecks

Obedient, incident illumination for space constrained applications.

- Made with chrome plated semi-obedient metal or black dekabon semi-rigid gooseneck tubing
- Easily adjustable, precise positioning offers complete control of light placement
- Dual models illuminate workspace with a single light source
- Gooseneck legs placed in opposing positions create near shadow-free illumination
- Standard output ferrules accept spot lenses and polarizing caps (See the Accessories section)
- Model number A08575 is a dual focusing gooseneck that has permanently attached spot lenses, easily focused by turning the knurled lens barrels
- Modified standard and custom configurations are available



Single Black Gooseneck, A08410



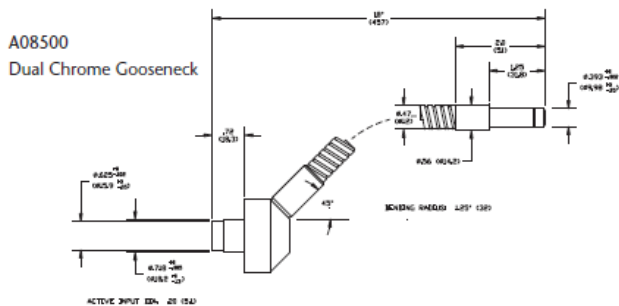
Dual Chrome Gooseneck, A08500

Single and Dual Goosenecks

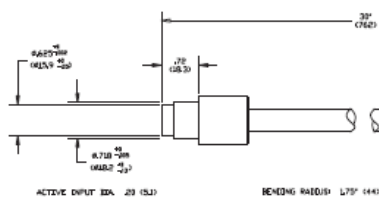
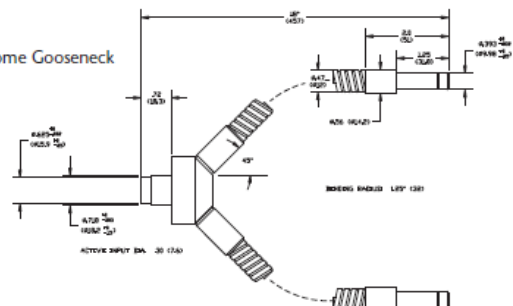
Dimensions in () are in mm

Bundle Input: Black Anodized Aluminum / Bundle Sheathing: Chrome or Black Dekabon

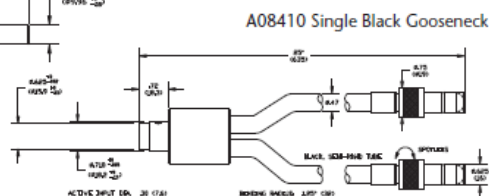
A08500
Dual Chrome Gooseneck



A08400
Single Chrome Gooseneck



A08575 Dual Black Gooseneck



Warning : This product is manufactured with glass fiber. Not for use in cable/hose carrier. Call MORITEX to discuss moving cable/hose carrier applications.

Goosenecks

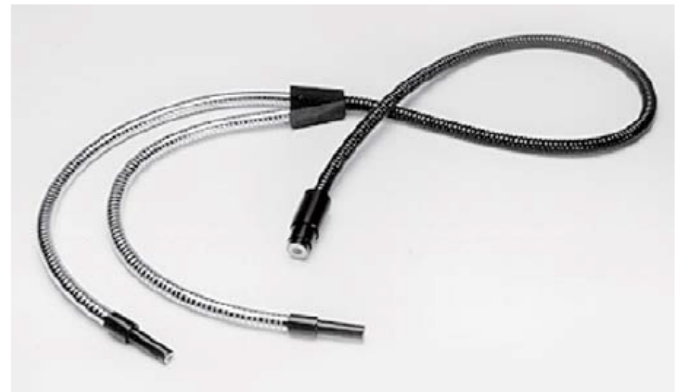
Part No.	Tubing	Distal Ferrule Diameter	Active Input Fiber Diameter	Gooseneck Tubing Diameter	Gooseneck Length
Single					
A08400	Chrome	.20" (5)	.393" (10)	.47" (12)	18" (457)
A08410	Black	.20" (5)	.393" (10)	.47" (12)	30" (762)
Dual					
A08500	Chrome	.30" (8)	.393" (10)	.47" (12)	18" (457)
A08575	Black	.30" (8)	.21" (5)	.47" (12)	23" (584)

Dimensions in () are in mm

Combination Goosenecks & Bundles

Obedient, incident illumination for space constrained applications.

- Bundle sheathing is made of PVC covered metal tubing and the gooseneck is made of semi-obedient, chrome-plated metal gooseneck tubing
- Bend radius of the chrome gooseneck tubing is 2-3" (51 - 76)*
- Easily adjustable, precise positioning offers complete control of light placement
- Dual models illuminate a workspace with a single light source
- Gooseneck legs placed in opposing positions create shadow-free illumination
- Modified standard and custom configurations are available



Combination Dual Gooseneck with Bundle, A08520



Combination Gooseneck, Bundle, and Bracket, A08512 for Olympus SZX Series Microscopes

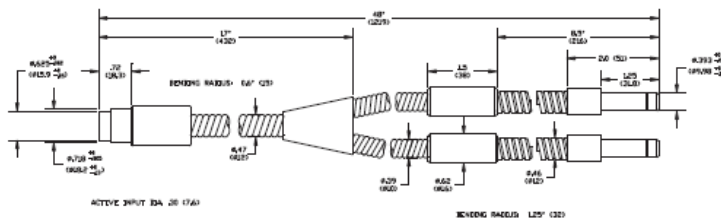
Combination Goosenecks & Bundles

Dimensions in () are in mm

Bundle Input: Black Anodized Aluminum / Bundle Sheathing: PVC Covered Metal Tubing / Gooseneck Sheathing: Chrome Plated Steel

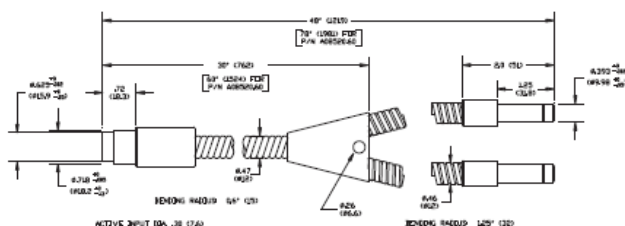
A08510

Combination Gooseneck and Bundle

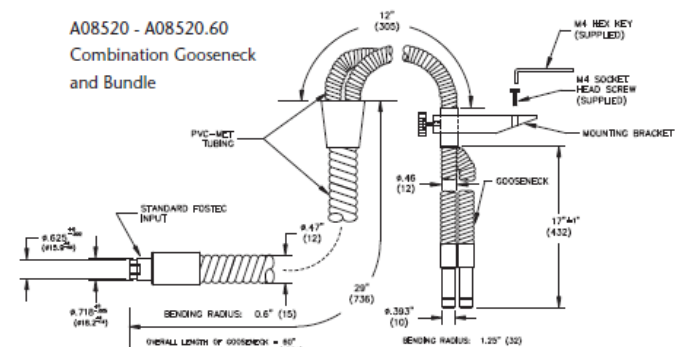


A08512

Combination Gooseneck and Bundle



A08520 - A08520.60
Combination Gooseneck
and Bundle



Warning : This product is manufactured with glass fiber. Not for use in cable/hose carrier. Call MORITEX to discuss moving cable/hose carrier applications.

Combination Goosenecks and Bundles

Part No.	Active Input Fiber	Active Output Fiber Diameter	Bundle Tubing Diameter	Gooseneck Tubing Diameter	Bundle Length Diameter	Gooseneck Length
Combination Goosenecks and Bundle(s)						
A08510	.30" (8)*	.21" (5)	.47" (12)	.46" (12)	17" (432)	8.5"(216)
A08512	.30" (8)	.21" (5)	.47" (12)	.46" (12)	29" (737)	17"(432)
A08520	.30" (8)	.21" (5)	.47" (12)	.46" (12)	30" (762)	18"(457)
A08520.60	.30" (8)	.21" (5)	.47" (12)	.46" (12)	60" (1524)	18"(457)

Dimensions in () are in mm

Support Apparatus

For accurate positioning in both industrial and laboratory environments.

Support Apparatus

Part No.	Description
A08508	Bundle holder with .565" (14.4) dia. hole for all bundle diameters up to .51" (13). Has an M6 thread.
Universal Post Clamps	
★ A08522	Ring for 18 mm post. Zeiss IVB Stereo, IB, III, IV, IVB
★ A08523	Ring for 20 mm
★ A08524	Ring for 24.5 mm
★ A08525	Ring for 25 mm
★ A08526	Ring for 32 mm
★ A08527	Ring for 22 mm
★ A08528	Ring for 29 mm

★ Made-to-order products.



A08522

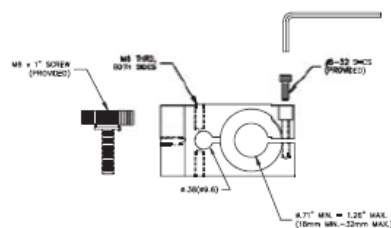


Articulated Arm, A08505

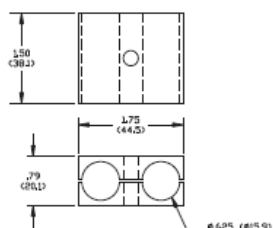
Gooseneck & Bundle Support Apparatus

Dimensions in () are in mm

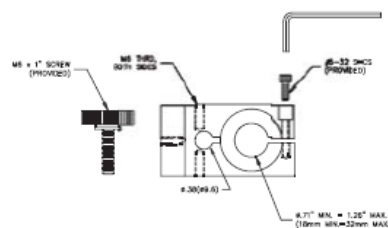
A08522



A08502 Clamp Set



A08522 - A08528 Clamps



A08508

Support Apparatus

Part No.	Description
A08505	Articulated arm with M6 thread on one end (will attach to heavy base and V-clamp) and M8 thread on the other end which will fit our A08592 dual V-clamp.
A08506	Articulated arm with M6 threads on both ends. Versatile accessory easily locked into place with only one knob. Can be used with our base and V-clamp and will accept all holders.
A08507	3 1/2 lb. Base for attaching up to three support arms and/or posts at once. M6 threads only.
A08590	Spring Clamp with M6 thread. Industrial strength universal clamp that can be used with our articulated arms to hold bundles, light lines and other equipment. Secure to tabletops or other like sur faces.
A08591	V-Clamp with two M6 threaded holes to use as a table clamp and will accept all our holders.



Articulated Arm, A08506



Spring Clamp, A08590



Base, A08507

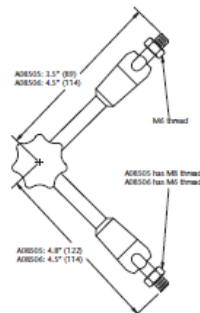


Bundle Extender Nylon Tipped Set Screws

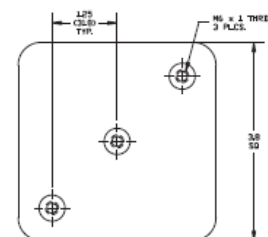
Support Apparatus

Dimensions in () are in mm

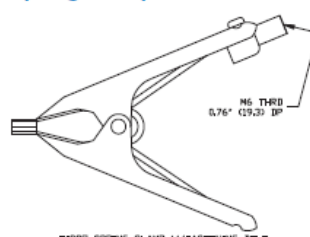
A08505 & A08506 Articulated Arms



A08507 Base



A08590 Spring Clamp



A08591 V-Clamp

