

The EasyLED series integrates advanced LED illumination and control functions into a single compact device. It is the ideal standard illumination system for routine examinations, research, and education applications.



Spot illumination

The EasyLED Spotlight and the EasyLED Double Spotlight Plus are an ingenious design that allows mounting to any microscope stand.

The intensity control is ergonomically located near the microscope focus knob. The robust metal lighthouse emits up to 130 lm of cool light and rated lifetime is 50,000 hours minimum.



Transmitted illumination

The EasyLED Transmitted Light Stage features a SCHOTT Opalika® surface that offers homogeneous and shadow free illumination.

Its robust metal housing and a functional design, delivers up to 12,000 cd/m² and a long life time of at least 50,000 hours.

**SCHOTT AG**  
Hattenbergstrasse 10  
55122 Mainz  
Germany  
Phone +49 (0)6131/66-7796  
Fax +49 (0)6131/66-7850  
info.microscopy@schott.com  
www.schott.com/lightingimaging



30074 ENGLISH 09/2019 Ali/odd Printed in Germany

**SCHOTT**  
glass made of ideas

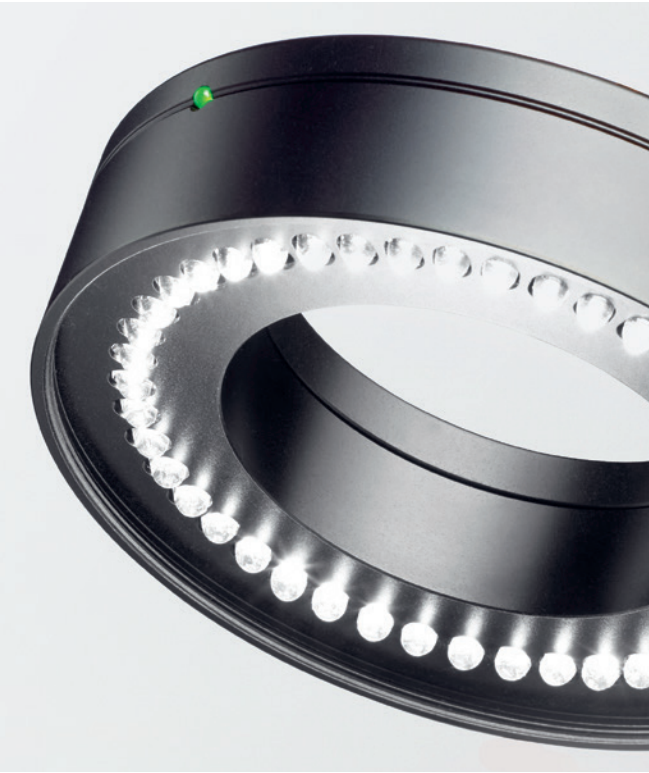
A Good Image  
Requires Good Light

SCHOTT EasyLED

A good image requires good light

SCHOTT EasyLED illumination system

Optimal illumination of objects under examination is one of the most decisive factors for good results in stereo-microscopy. Ideal light is necessary for detection of hidden details, differentiation of specific areas and emphasis of special characteristics.



Ring illumination

The EasyLED Ringlight enables homogeneous and shadowless illumination with a maximum brightness of 90 kLux and a long life of at least 50,000 hours. It features a robust metal housing and a highly functional design.

The powerful 140 kLux EasyLED Ringlight Plus has additional controllable segments that enable new contrast methods. The integrated control element allows easy and intuitive switching between the different illumination modes, as well as a rotation function in both directions.



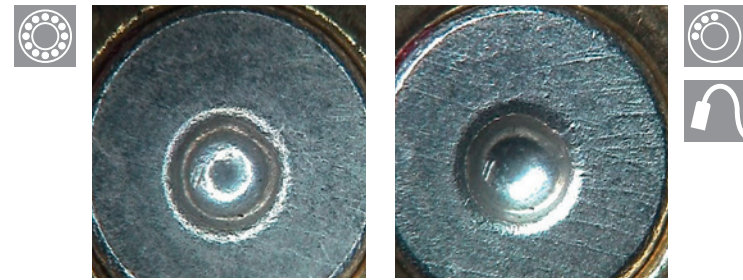
Accessories

We offer suitable accessories for the EasyLED Ringlight Plus for the reduction of disturbing surface reflections.

The ringlight diffuser enables homogenization and diffusion of the light, which significantly reduces surface reflections. The Polarizer Set, which consists of a rotating polarizer in front of the LEDs and an analyzer in the observation ray path, makes it possible not only to eliminate reflections, but also to emphasise double-refracting materials.

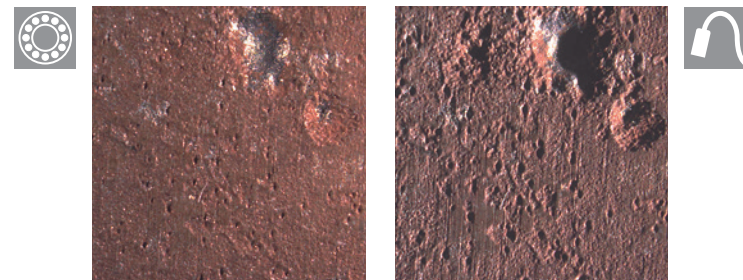
Caption title: Cross section through the sciatic nerve, illuminated with EasyLED Transmitted Light Stage.





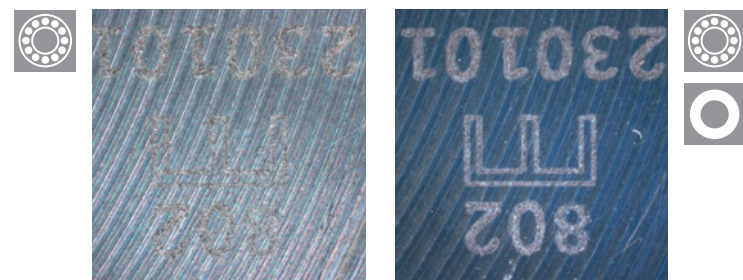
LED Ringlight

Segmentation LED Ringlight and oblique lighting



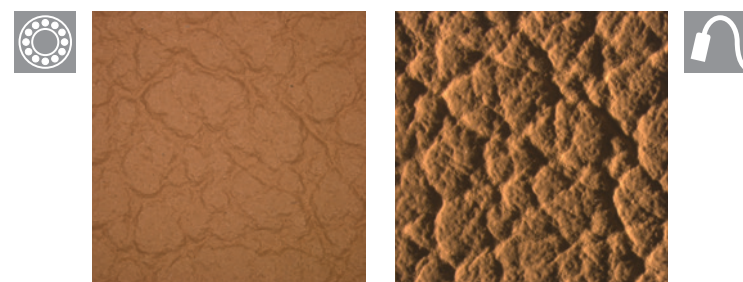
LED Ringlight

Oblique lighting



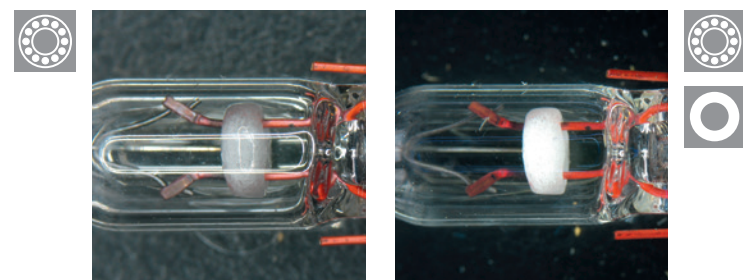
LED Ringlight

LED Ringlight and polarization



LED Ringlight

Oblique lighting



LED Ringlight

LED Ringlight and polarization

### EasyLED Ringlight

P/N 600.200

- High intensity (90 kLux)
- 45 high-power LEDs
- Working distance 50-135 mm
- Integrated control
- Lifetime > 50,000 hours

### EasyLED Ringlight Plus

P/N 600.300

- Highest intensity (140 kLux)
- 48 high-power LEDs
- Working distance 50-130 mm
- Integrated control
- Segmentable
- Lifetime > 50,000 hours

### Accessories

- For EasyLED Ringlights
- To reduce surface reflections

### Diffuser

P/N 400.570

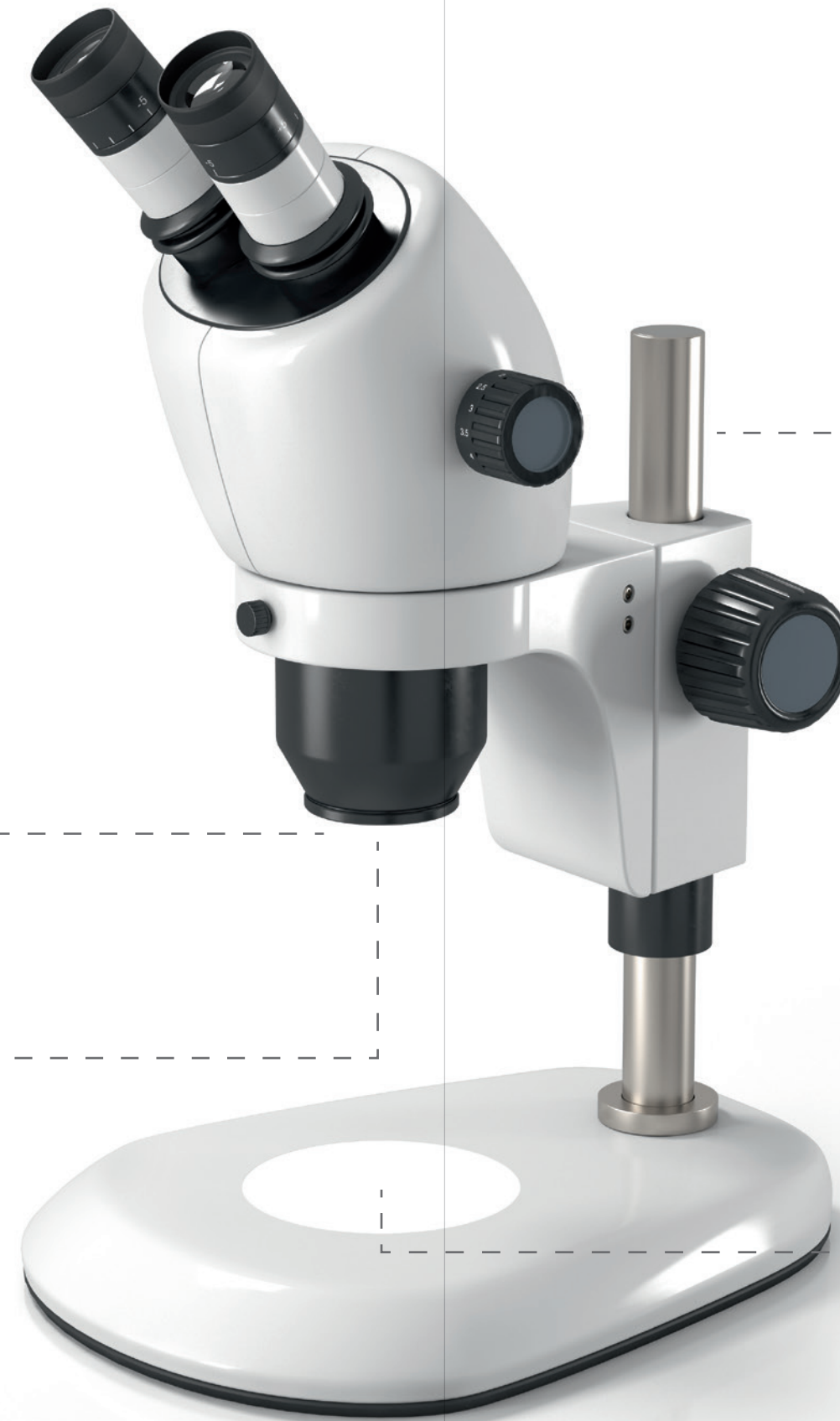
### Polarizer Set

P/N 400.550



EasyLED Ringlight

### Accessories



EasyLED Double Spotlight Plus



### EasyLED Transmitted Light Stage



### EasyLED Double Spotlight Plus

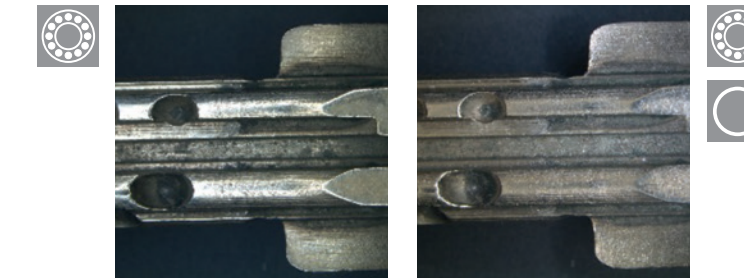
P/N 600.121

- Intensive 130 lm per lighthouse
- Lighthouses can be controlled individually
- Lifetime > 50,000 hours

### EasyLED Transmitted Light Stage

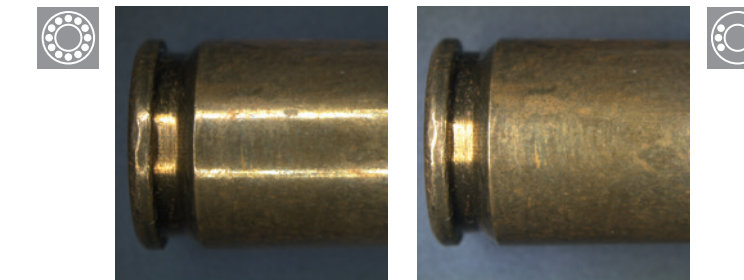
P/N 600.400

- High luminance of 12,000 cd/m<sup>2</sup>
- Integrated control
- Scratch-resistant surface
- Lifetime > 50,000 hours



LED Ringlight

LED Ringlight and diffuser



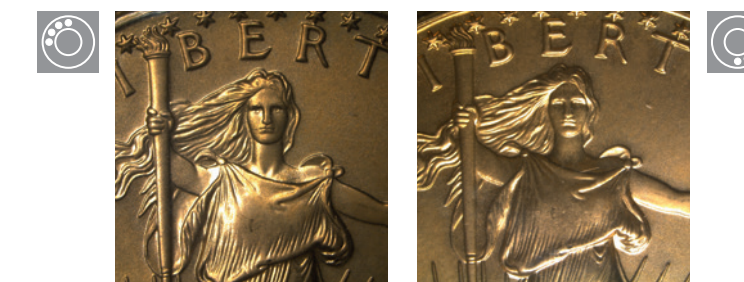
LED Ringlight

Segmentation LED Ringlight



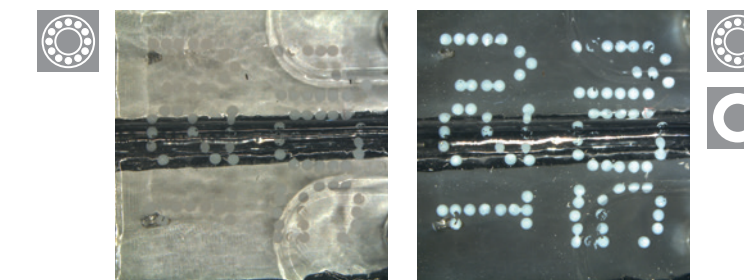
Transmitted Light

Transmitted Light



Segmentation LED Ringlight

Segmentation LED Ringlight



LED Ringlight

LED Ringlight and polarization