

# Use Case of Deep Learning Inspection

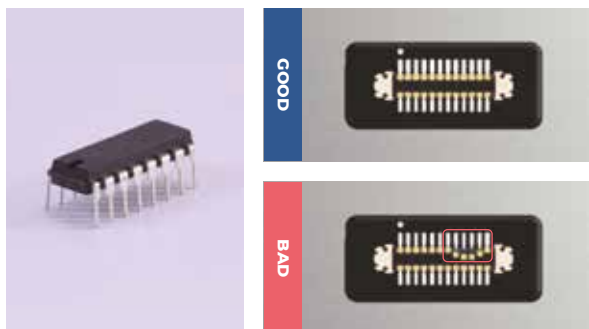
- Electronics
- PCB
- Display
- Battery
- Automotive parts
- Food



**NEUROCLE**  
DEEP LEARNING VISION SOFTWARE

**Electronics**

**IC Chip**



IC chip Defect Inspection  
 Classify IC chips with terminal breakage and incorrect alignment as defects using Classification model

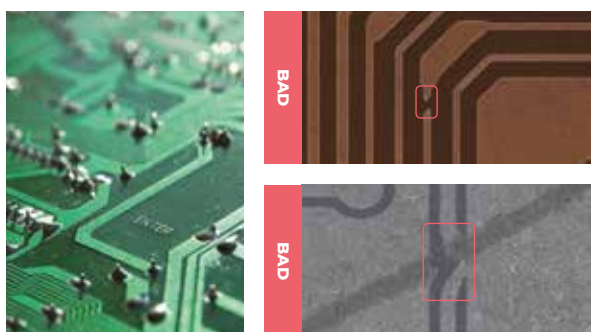
**Earphone Filter Mesh**



Earphone Filter Mesh Inspection  
 Classify 6 types of filter mesh including regular items and defective items such as broken yarn

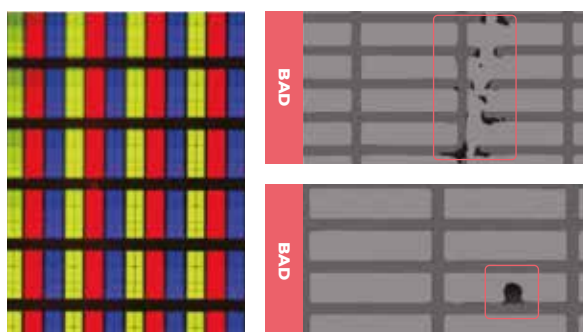
**PCB & Display**

**PCB**



PCB Defect Inspection  
 Classify 14 types of defects including Short, Open and Slit using Classification model

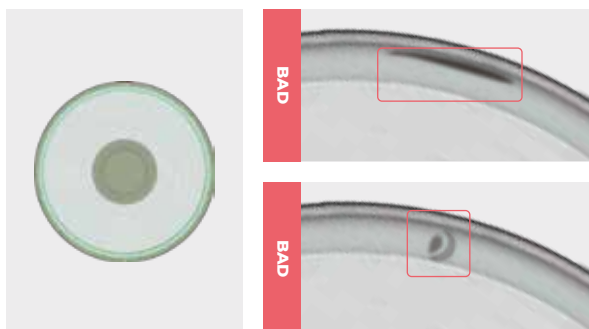
**LCD Panels**



LCD Panel Array Defect Inspection  
 Inspect 5 types of defects such as Scratch and Gel using Classification and Segmentation models

**Battery**

**Cylindrical Batteries**



Cylindrical Batteries Defect Inspection  
 Detect defects such as non-welding and pin hole areas using Segmentation model

**Pouch-type Batteries**



Pouch-type Batteries Surface Inspection  
 Classify different types of products including defective items that are stamped and items with electrolyte leakage



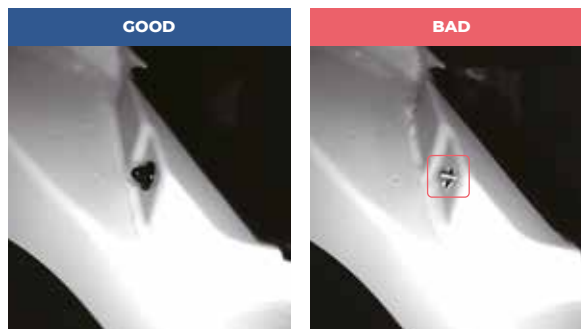
### Automotive Parts

#### VIN Number



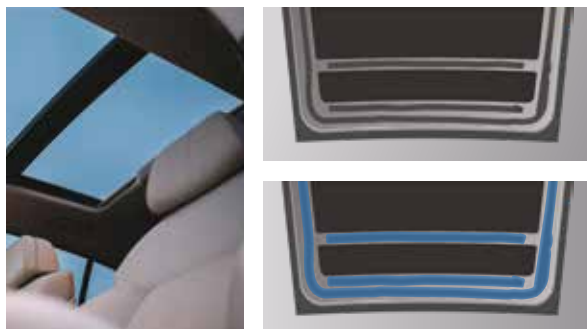
VIN Number Recognition  
Recognize alphabets and numbers of a VIN using OCR model

#### Bolts / Nuts



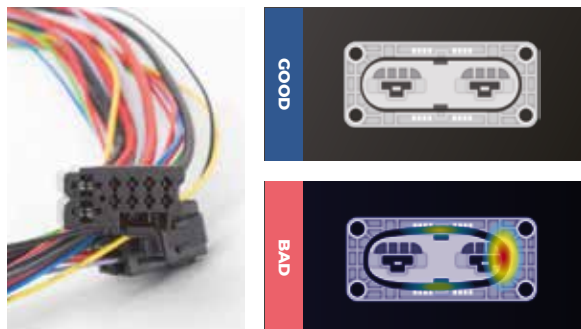
Bolt and Nut Assembly Status Inspection  
Check an assembled state of bolts and nuts using Object Detection model

#### Sunroof Glue



Sunroof Glue Attached Areas Detection  
Detect a region and width of areas that are bonded with Sunroof Glue using Segmentation model

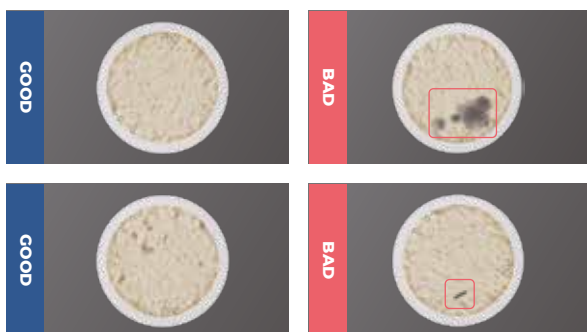
#### Electrical Wire Connectors



Electrical Wire Connectors Inspection  
Classify different types of defects including damaged defects and incorrectly combined defects

### Food

#### Instant Rice



Instant Rice Inspection  
Classify 8 types of real defective items and fake defective items using Classification model

#### Beverage



X-ray Inspection of Beverages  
Inspect the presence of a foreign substance inside a beverage

