



Caméra HHC X4 PRO

Caméra rapide Mega Speed

Brochure produit

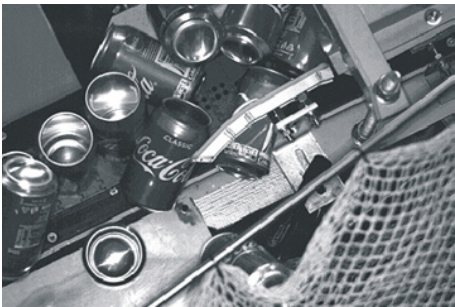


A portable hand-held high speed camera for trouble-shooting line jams
and eliminating product waste

Resolution and FPS

Min FPS: 25			Approx.Record Time Sec	
Width	Height	Max FPS	4 GB RAM	8 GB RAM
1280	1020	617	5.3	10.5
1280	720	872	5.3	10.5
800	600	1046	8.5	17.0
640	480	1304	10.5	21.0
320	240	2500	20.0	40.0

Sample Applications



Food Processing



Cap Crimping



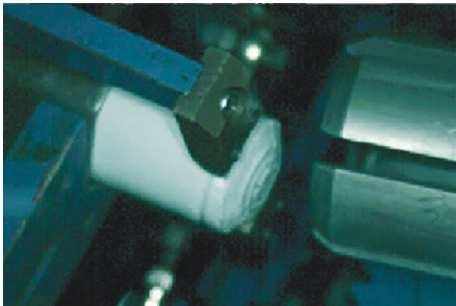
Can Labelling



Can Filling



Tin Sealing



Beverage Packaging

Rugged, impact resistant, shock protected, high strength injection molded case

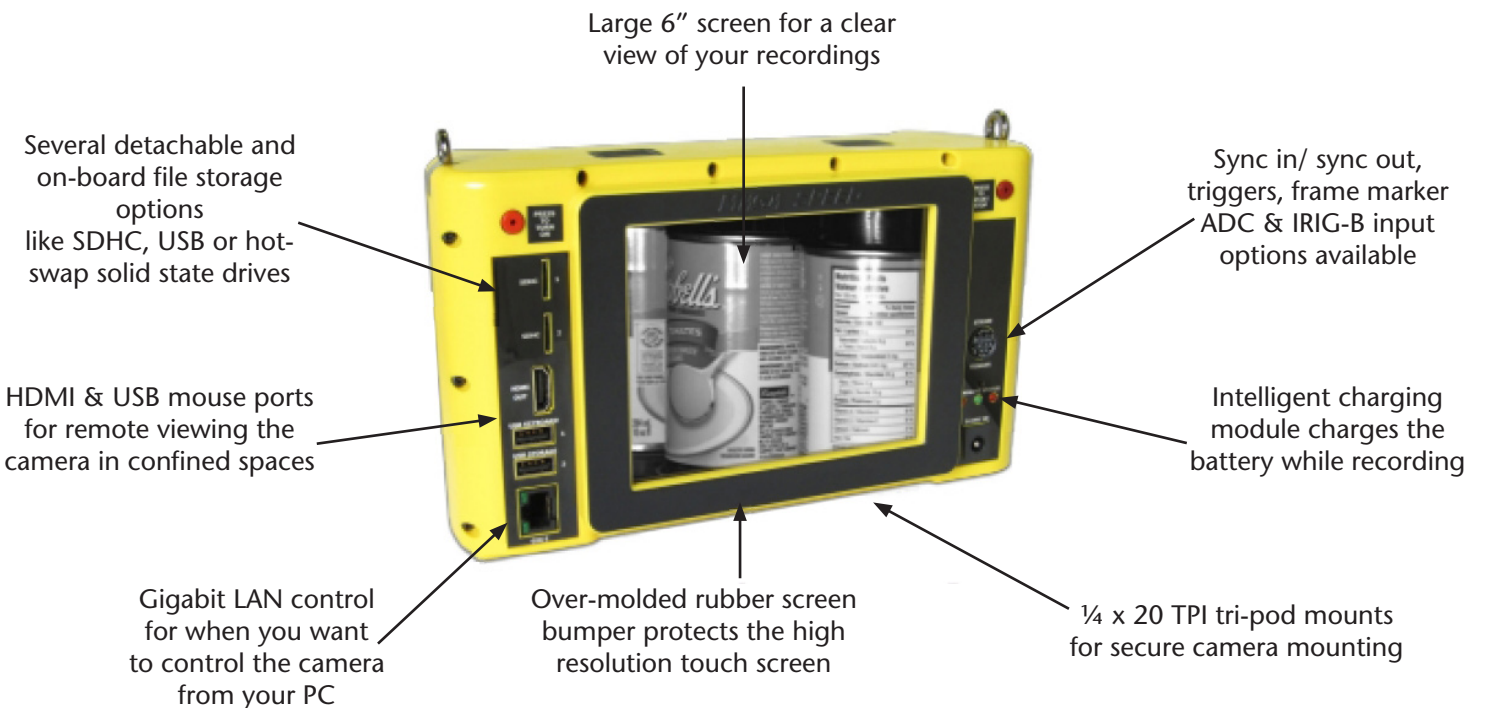
Industry standard "C" mount or optional "F" mount for easy lens selection

Re-moveable solid state drive technology for years of worry free performance

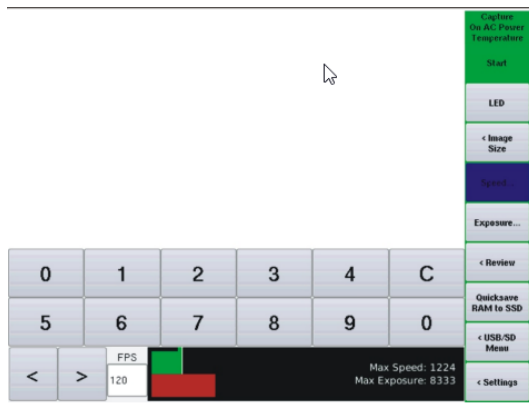
Convenient neck strap mounts for added comfort while recording

Ergodynamic over-molded rubber hand grips prevent accidentally dropping your camera

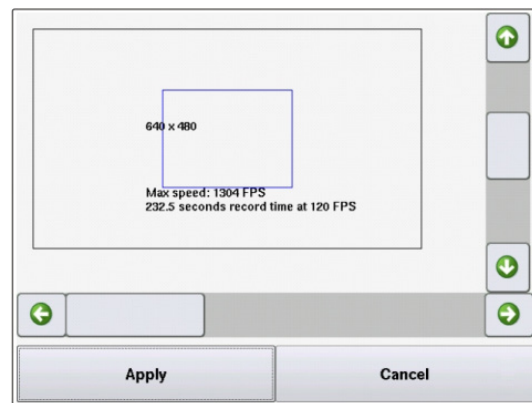
With the built in high power LED work lights there is no need to drag around or plug in extra work lights



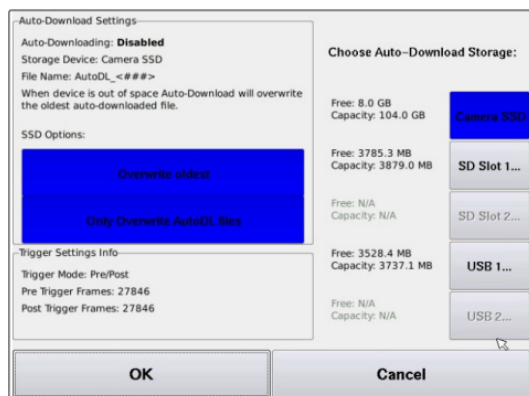
Recording rates from 30 fps to 5000 fps for up to 20 minutes in a circular buffer



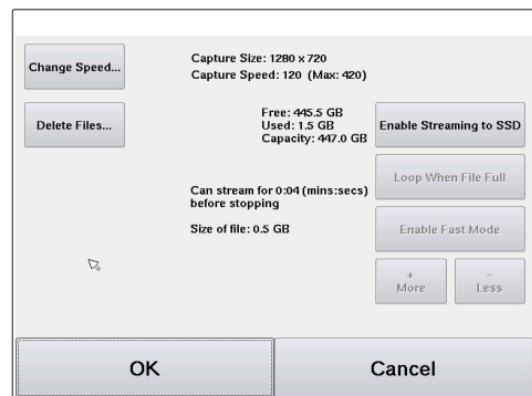
Easy to follow menu for all camera settings



Select any image size to match your application



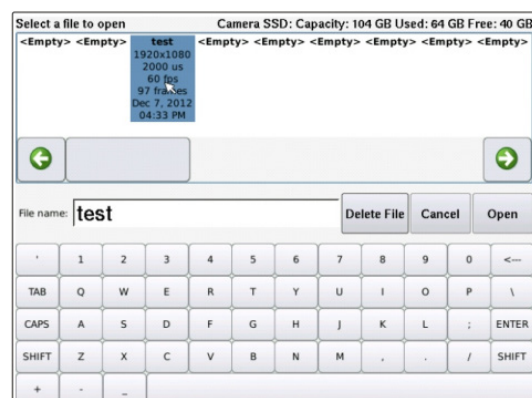
Auto-download options to continuously save event trigger video from your plc



Save right to the cameras ssd for extended recoding times

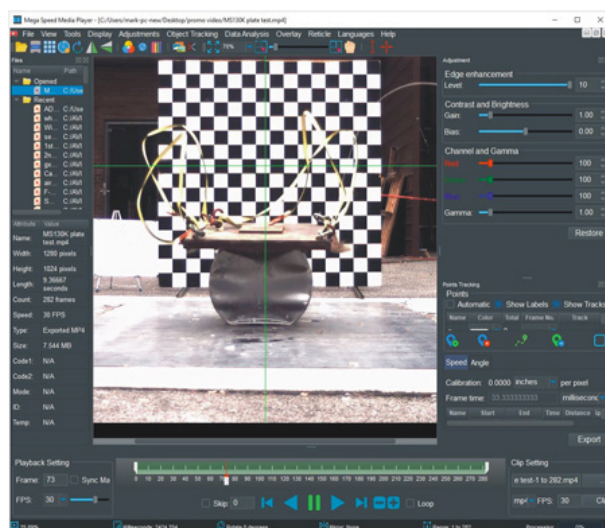
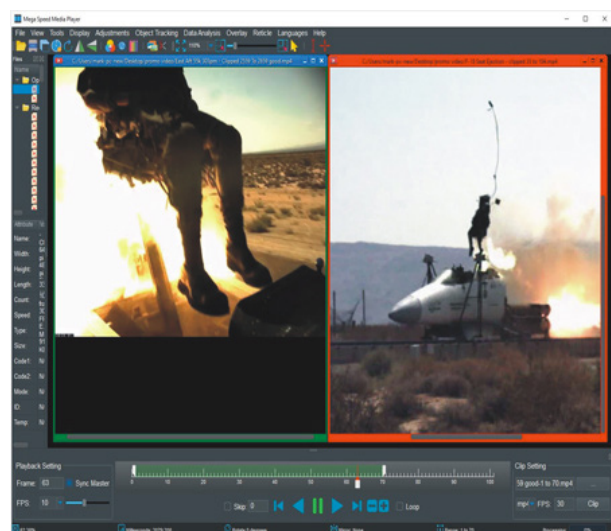
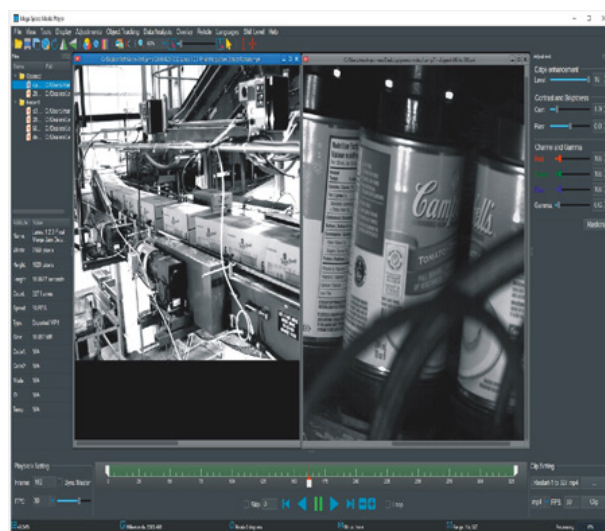
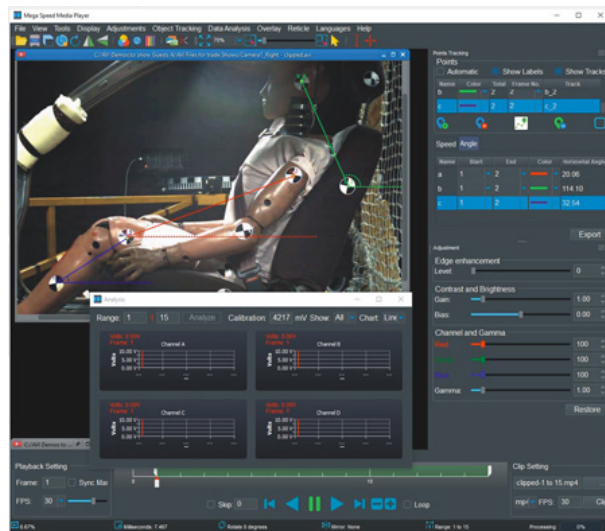


Multiple storage & file saving options



Easy to manage file location menu

Software

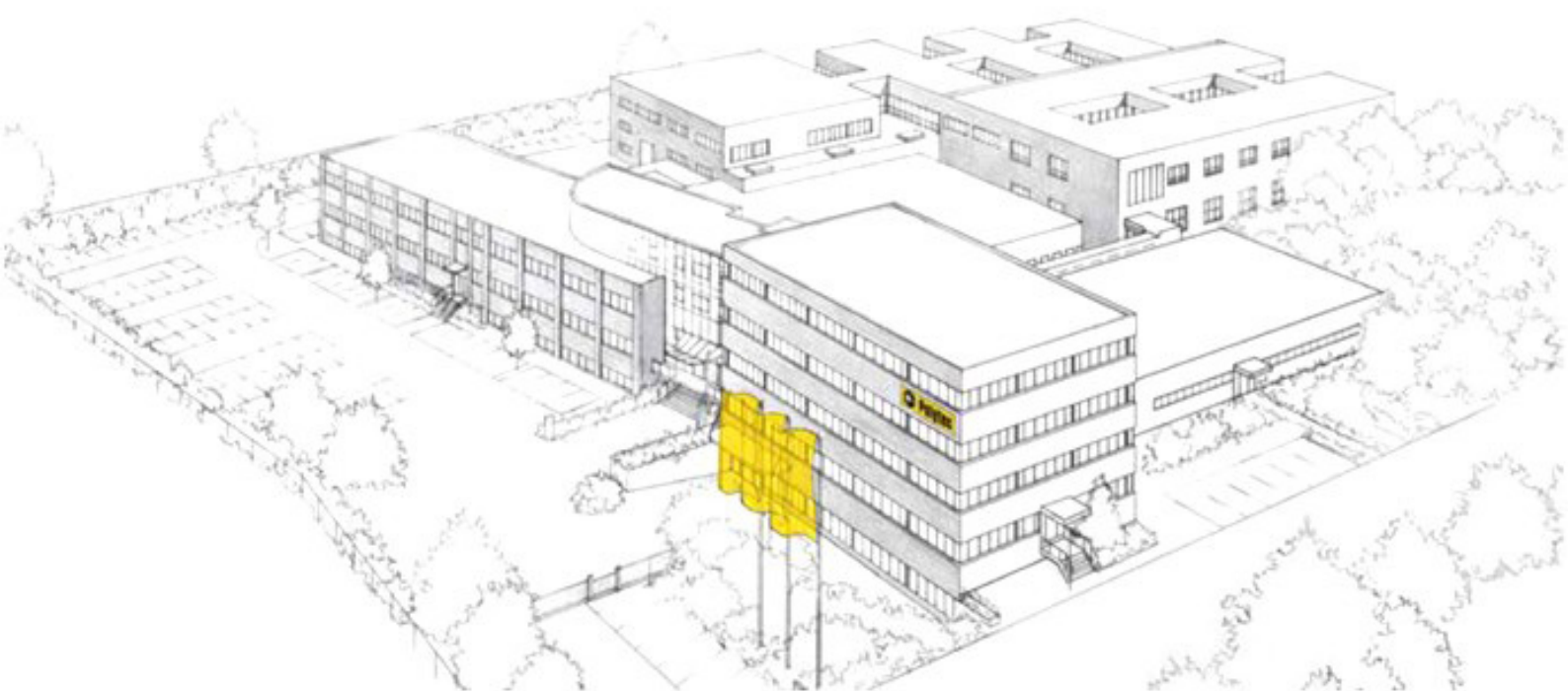


Making sense of your high speed image data. The included mega speed media player!

New tools to measure, synchronize, batch process, clip and compress. the fastest video analysing work-flow available. Helping you make sense of all your high speed image data. \$1995.00 value free with every mega speed camera.

Technical data

Sensor Type	CMOS image sensor. 1" format. Available in either monochrome or color versions
Work Lights	Built in high power LED work lights
Maximum Resolution	1280 x 1024
Minimum Resolution	320 x 240
High Speed Mode	615 fps @ 1280 x 1024 / 1300 fps @ 640 x 480
Pixel Size	7 x 7 micron pixels
Shutter Speed	Global electric shutter 2 us to 40 milli-seconds in precise 1-2 us steps for no high speed blur
LCD Screen	Rear high resolution LCD screen monitor. Full touch screen operation and control
ISO	User selectable from 200 minimum to 3200 maximum setting
A-D Converter	10 bit pixel bit depth
Trigger In	3 to 48 VDC TTL centre pin positive active high via multi pin connector or by on camera
Strobe/Sync Out	3.3 VDC TTL via multi pin connector centre pin positive, active high
Input Voltage	14 VDC from wall adapter when required
IRIG B	Optional IRIG B time code ready via multi pin connector for time stamping on recorded images
Data Acquisition	Data acquisition connection of rear of camera to accept outside signal source
File Saving	User can save images in AVI, JPEG, BMP, TIFF, RAW and DNG file formats
Streaming Mode	Stream in long record mode up to 2000 fps to the internal removable SATA SSD
Video Out Formats	HDMI
Camera Memory	4 GB standard high speed internal image buffer memory, Removable SSD are available
Removable Storage	1, 1.8" SATA drive bay, 2 USB ports and 2 SDHC ports
Tripod Support	Camera has integrated ¼ x 20 tri-pod thread
PC Requirements	2GHz, 8 GB RAM. 1 USB and 1 Gig E connection. (Only needed if you connect camera to a PC)
PC Software	Camera control software for image transfer, object tracking, image analysis, video editing
PC Interface	Gigabit Ethernet for full camera control and downloading files from the camera's RAM & SSD
Camera Cable	Requires Cat 6 Ethernet cable for PC connection and control
Lens Mount	Standard "C" mount. "F" mounts available
Camera Size	3" x 9" x 5"
Camera Weight	3.5 lbs with battery
Camera Body	Self contained, hand held with advanced light weight rugged Space Age ABS body
Camera Battery	Lithium-ion re-chargeable / removable battery for 5 hrs camera operation
Temperature	0°C to 45°C Operational range. -40°C to +50°C storage range



Shapping the future since 1967

Hightech for research and industry
Pioneers. Innovators. Perfectionnists.



Polytec France

Technosud II Bâtiment A, 99 rue Pierre Semard 92320 CHATILLON
Tel. +33 1 49 65 69 00, Fax. +33 1 57 19 59 60, info@polytec.fr

Contactez-nous pour un essai ou pour un devis

www.polytec.fr
www.polytecstore.fr

