

High Speed Trouble - Shooting Camera Experience You Can Trust!

Happy Clients

When our clients are successful we're successful. We go the extra mile to do everything we can for our clients. When they recommend us to someone else we know that we're on the right track.

One-on-One Support

Anyone can make a plan. We want to help you achieve it. That is why we're always there for you with the advice that you need.



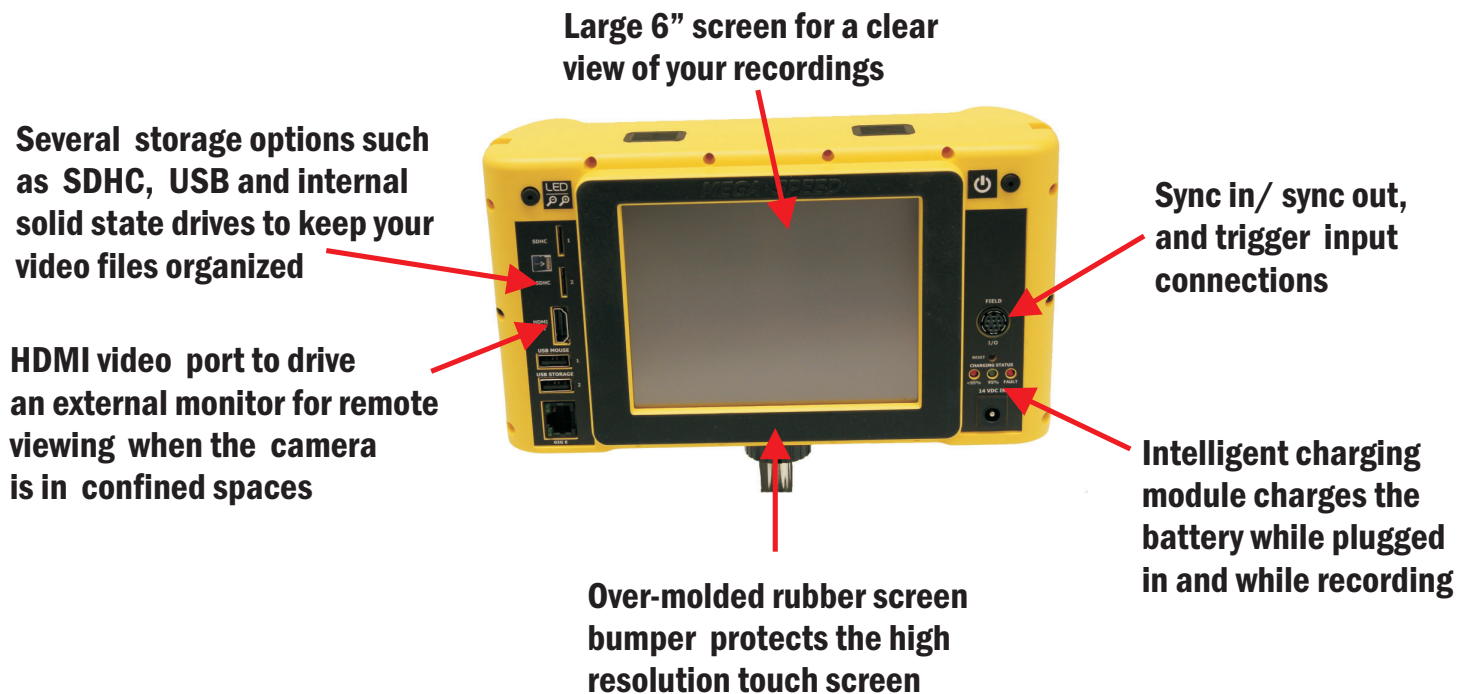
Specifications

Image Sensor:	1280 x 1024 resolution 1" format CMOS 10 bit 10 x 10 micron pixels. Available with b/w or color sensors .
Optical interface:	"C" Mount.
Frame Rate:	25 fps to 1500 fps @ 1280 x 1024 image resolution.
Shutter Speed:	Global electronic shutter 2 us to 40 milli-seconds in precise 1-2 us steps for no high speed blur.
Light Sensitivity:	Three sensor boost levels.
Camera RAM:	16 GB (Giga Byte) standard high speed internal image buffer memory.
Solid State Drive:	Internal 240 GB SSD. 256 GB, 512 GB and 1 TB SSD's are available as an option.
Storage Options:	Internal 240 GB SSD, 2 X USB & 2 X SDHC ports for USB flash drives and SD cards.
Camera Software:	Full touch screen operation and control.
PC software:	Ships with video processing software for, object tracking, image analysis and video editing.
LCD Screen:	Rear high resolution LCD screen monitor. Full touch screen operation and control.
Synchronization:	Sync in signal 3.3 to 10 VDC, Sync out signal 3.3 VDC.
Trigger Type	Switch Closure / dry contact trigger type.
Video Out Format:	HDMI video out port.
File Formats:	User can save images in AVI, JPEG, BMP, TIFF, RAW and DNG file formats.
Camera Body:	Self contained, hand-held, advanced, light weight and rugged impact resistant ABS body.
Camera Size:	Depth 7.8cm x width 22.8cm x height 12.5cm.
Camera Weight:	Light weight 1550g / 3.5 lbs with battery.
Camera Battery:	Lithium-ion re-chargeable / removable battery.
Input Voltage:	14 VDC from wall adapter for charging internal battery or for continuous camera operation.
Temperature Range:	0°C to 45°C Operational range. -40°C to +50°C storage range.
Tripod Support:	Camera has integrated ¼ x 20 tpi bottom location tri-pod mount.
PC requirements:	2GHz, 8 GB RAM and 1 USB. (for use when transferring files to your PC for video editing).

Mega Speed[®] E1 ECO

FEATURES

The Right Solution To Support Your Preventative Maintenance Staff



Mega Speed. Recording Rates For All Applications

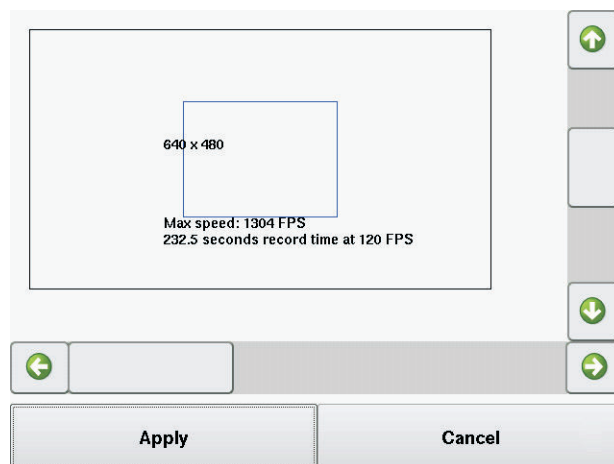
Mega Speed[®] E1 ECO

SOFTWARE

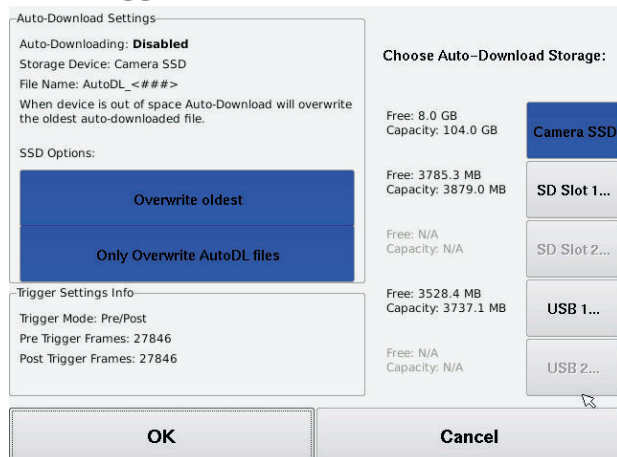
Easy To Follow Menu For All Camera Settings



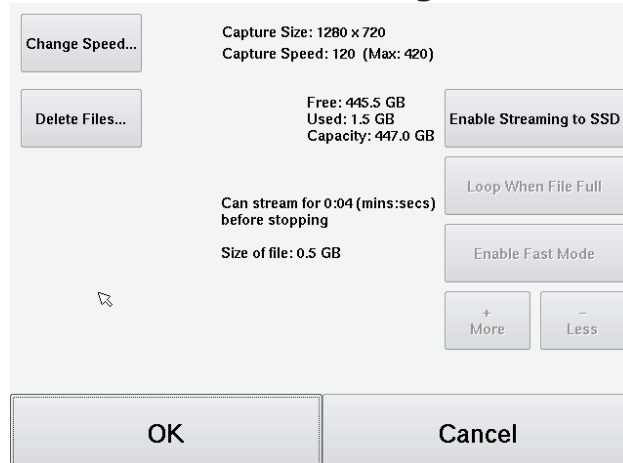
Select Any Image Size To Match your Application



Auto-Download Options To Continuously Save Event Trigger Video From Your PLC



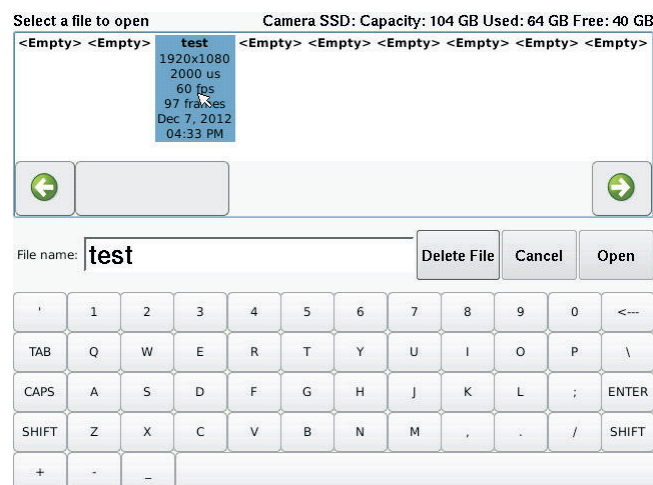
Save Right To The Cameras SSD For Extended Recording Times



Multiple Storage & File Saving Options



Easy to Manage File Location Menu





Polytec France S.A.S.
Technosud II Bâtiment A
99 Rue Pierre Semard
92320 Châtillon
Tel. +33 1 49 65 69 00
info@polytec.fr

Contacts : PHOTONICS/VISION
Elvis DZAMASTAGIC
Tel. +33 1 49 65 69 07
e.dzamastagic@polytec.fr

Christophe COURTOIS
Tel. +33 1 49 65 69 03
c.courtois@polytec.fr



**Polytec GmbH
(Germany)**
Polytec-Platz 1-7
76337 Waldbronn
Tel. +49 7243 604-0
info@polytec.de

**Polytec GmbH
(Germany)**
Vertriebs- und
Beratungsbüro
Schwarzschildstraße 1
12489 Berlin
Tel. +49 30 6392-5140



**Polytec, Inc.
(USA)**
North American
Headquarters
16400 Bake Parkway
Suites 150 & 200
Irvine, CA 92618
Tel. +1 949 943-3033
info@polytec.com

Central Office
1046 Baker Road
Dexter, MI 48130
Tel. +1 734 253-9428

East Coast Office
25 South Street, Suite A
Hopkinton, MA 01748
Tel. +1 508 417-1040



Polytec Japan
Arena Tower, 13th floor
3-1-9, Shinyokohama
Kohoku-ku, Yokohama-shi
Kanagawa 222-0033
Tel. +81 45 478-6980
info@polytec.co.jp



**Polytec Ltd.
(Great Britain)**
Lambda House
Batford Mill
Harpenden, Herts AL5 5BZ
Tel. +44 1582 711670
info@polytec-ltd.co.uk



Polytec China Ltd.
Room 1026, Hanwei Plaza
No. 7 Guanghua Road
Chaoyang District
100004 Beijing
Tel. +86 10 65682591
info-cn@polytec.com



**Polytec South-East Asia
Pte Ltd**
Blok 4010 Ang Mo Kio
Ave 10
#06-06 TechPlace 1
Singapore 569626
Tel. +65 64510886
info@polytec-sea.com