

Better Images. Better Decisions. Better Process Control.

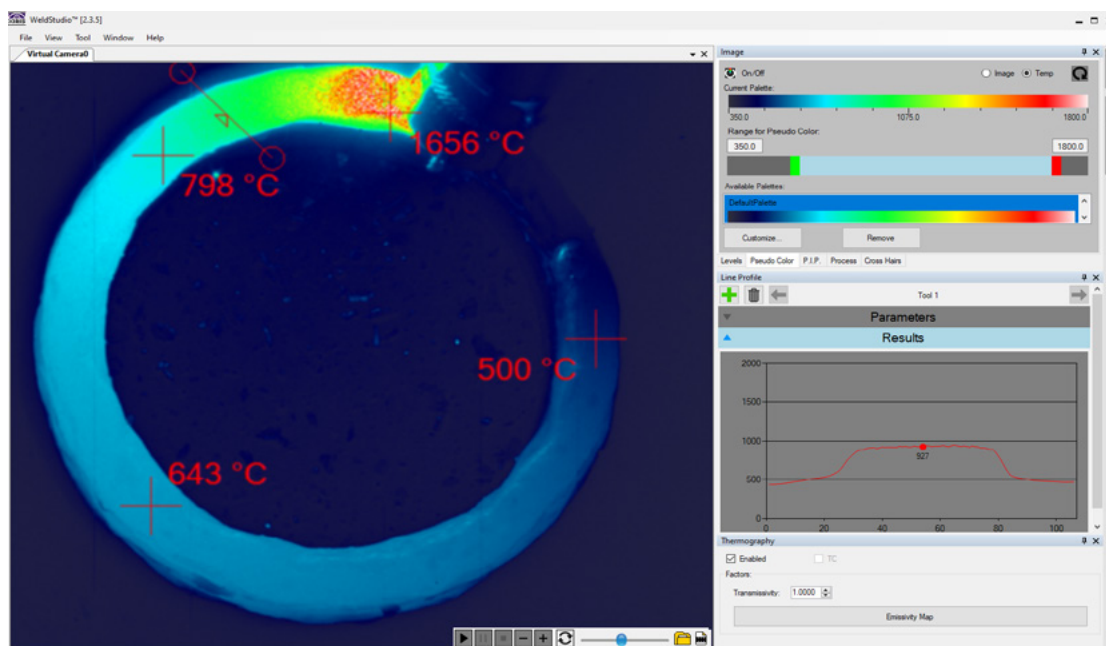
The **Xiris XIR-1800** is a High Dynamic Range (HDR) thermal camera designed for use in critical metal joining and Additive Manufacturing applications where thermal properties of key features need to be carefully monitored in real-time.

Combining a spectacular 120+ dB HDR capability with sensitivity to the Short-Wave InfraRed (SWIR) spectrum, the XIR-1800 Thermal Camera provides enhanced imaging of metal joining processes beyond what is visible using standard thermal or visible-light cameras.



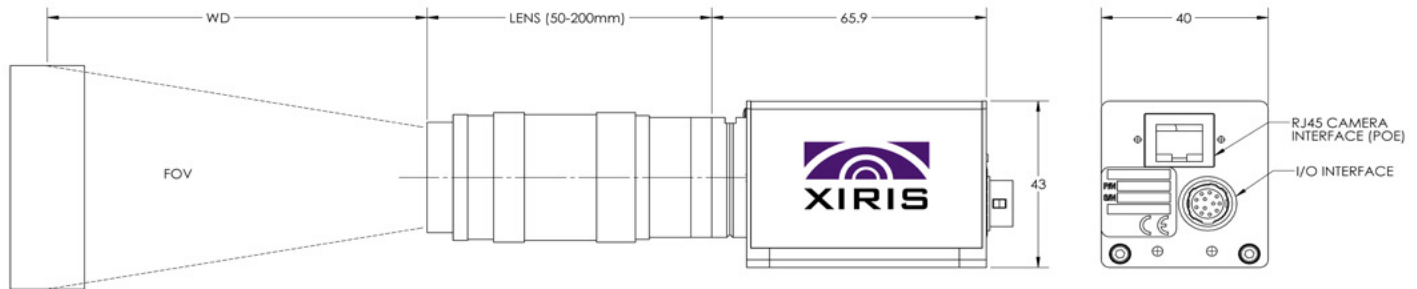
Benefits

- Enables, high contrast clear images of the welding arc or Laser process, melt pool and surrounding material.
- Provides a thermal temperature map to monitor key weld zones such as the melt pool, deposited material and surrounding base material for in-process control and quality assurance. From ~ 250 to over 1800°C.
- Provides thermal calibrated temperature measurements in the 350-1500 °C range, in Thermal Mode.
- Provides ability to image through smoke or fumes to provide an exceptionally clear, real-time views of any metal additive or welding process.
- Provides ability to capture high speed pulsing processes in real-time using Global Shutter and high frame rates, with or without triggering.
- Integrates with Xiris WeldStudio™ 3 Pro, allowing multiple Xiris weld cameras (thermal or visual) and a Xiris weld microphone to be integrated together for data synchronization, capture and analysis in one powerful software platform.
- Utilizes C-Mount lenses and can be configured with numerous optics to suit any application.



Xiris® XIR-1800 Thermal Camera

Camera Body Outline



Standard Lens Configurations

WD	F=35mm	F=50mm	F=75mm	F=100 mm (2 x 50)	F=150mm (2 x 75)
	FOV	FOV	FOV	FOV	FOV
100	34 x 27	16 x 13	N/A	10 x 8	N/A
200	63 x 51	36 x 28	19 x 16	21 x 17	12 x 9
300	90 x 72	55 x 44	33 x 26	36 x 32	19 x 16
400	118 x 93	75 x 60	46 x 37	43 x 35	27 x 21
500	147 x 118	95 x 76	59 x 47	55 x 44	55 x 44

Thermal Camera Specifications

Other lens options available

Camera Dimensions	40(W) x 43(H) x 66(L) mm without lens	Image Sensor	1" SWIR HDR InGaAs +120 dB
Camera Weight	140 g without Lens	Wavelength Sensitivity	900 - 1700 nm
Environmental Rating	IP54 (without housing)	Resolution	640H x 512V Pixels (15 µm square pixels)
Shutter Range	10 µs – 5000 µs Exposure	Temperature Sensing Range	~250 - 1800+ °C
Environmental Temperature	Ambient up to 35°C Up to 80°C with cooling plate	Thermally Calibrated	350 - 1500°C
Camera Connectors	Locking RJ 45 Ethernet (Cat 6+) Hirose HR10A for I/O and Trigger	Frame Rate	Up to 180 fps at full resolution; Up to 1000 fps at reduced resolution with AOI
Lens Mounting	C/CS Mount	Thermal Calibrated Mode	100+ fps, hardware dependent
Software	Xiris WeldStudio™ 3 Pro WeldSDK 2.0.6 or later	Image Data Format	14 Bit Imaging 16 Bit Imaging with Thermal Calibration
Humidity	Operating: 20 to 80% (non-condensing)	Camera Controls	Exposure Time, Frame Rate, AOI, Image format, Trigger and I/O,

Other accessories such as optics, cables, controllers, power adapters, etc., can be provided upon request.

Please contact your Xiris sales Representative for further information.



Xiris Automation GmbH
Holterkamp 18
40880 Ratingen, Germany
T: +49.2102.126.3835
E: sales@xiris.eu www.xiris.com



POLYTEC GmbH
Polytec-Platz 1 - 7
D -76337 Waldbronn
Tel: +49 (72 43) 604 4540
E-Mail: ot@polytec.de
www.polytec.de

For local representatives please visit www.xiris.com/contact-2. Specifications are subject to change without notice. July 2022.