

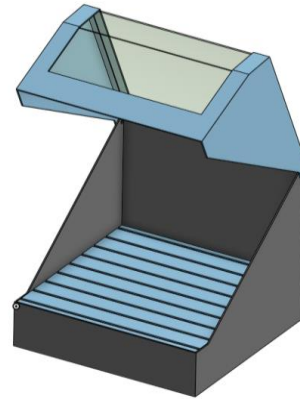
# 460 mm CONTROL STATION ENCLOSURE

INT01- CS460

*This control station can be used for measuring small size parts by the line or in lab.*

*The parts are manually placed by an operator into the control station. The Enovasense command box is under the measurement zone and the measurement is monitored through a separated laptop PC.*

- Easy to use
- No laser danger for users: follows the specifications of IEC60825 as a Class 1 laser device
- Special laser safe window for following the measurement sequence



Dimensions	L448 x w460 x h404 mm
Weight	100 kg
Power supply	100-240V 10A
Operating temperature	<40°C
Maximum size measurable (range of the axis)	400*400*100 mm

## WAY OF USE

### Loading step

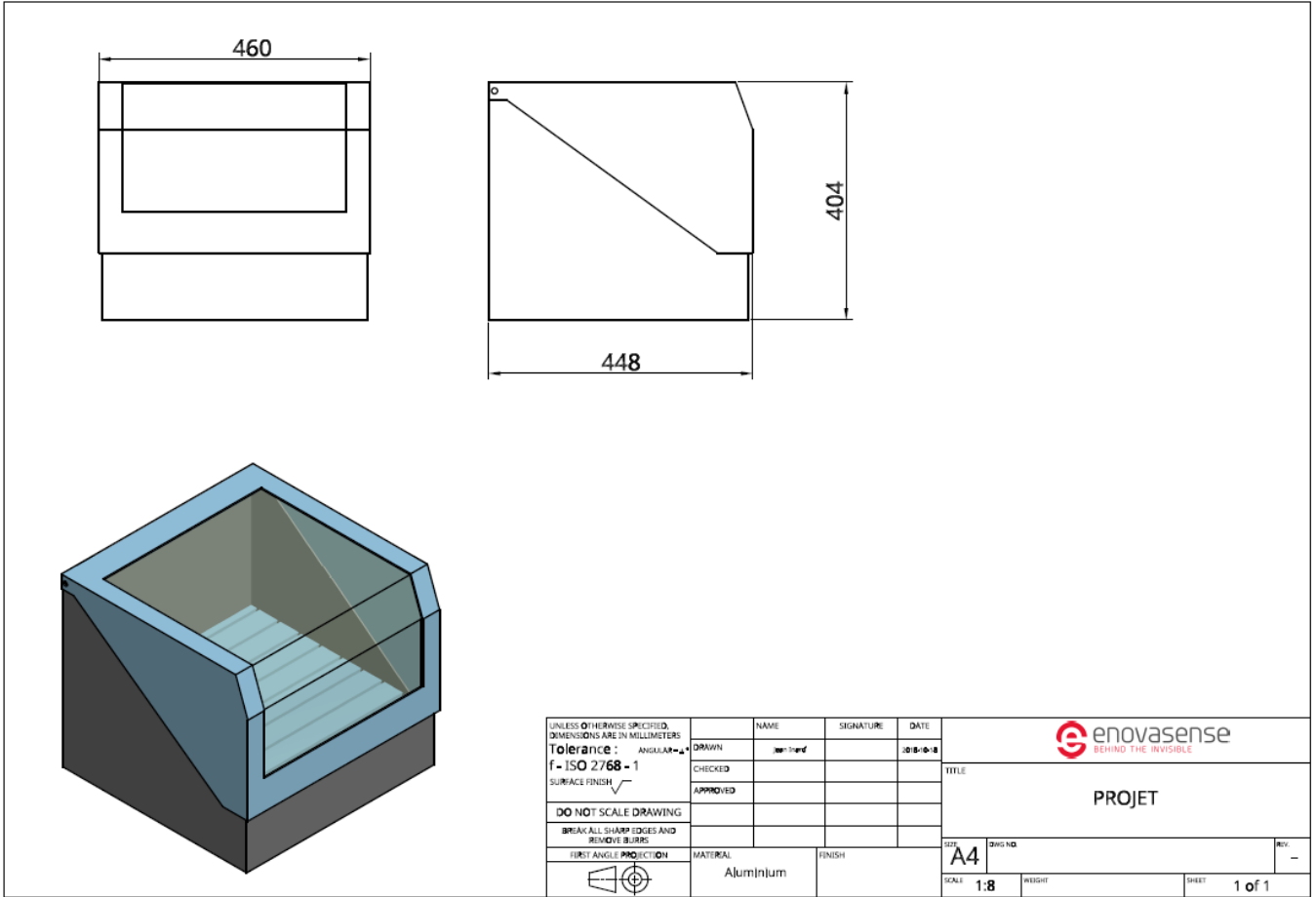
The operator opens the door, places the part into the measurement zone, adjusts the distance between the measuring head and the part to comply to the Enovasense device specification and closes the door.

### Measuring steps

The operator launches the measurement through the laptop PC of the Enovasense device (not included). He can follow the measurement through the window and the results on the laptop.

### Unloading step

The operator opens the door and takes the part.



### LIST OF INCLUDED MATERIALS

- Enclosure
- Power supply
- Power supply management