

New!  
3D scanner

**SMARTTECH 3D**  
Optical measurement systems

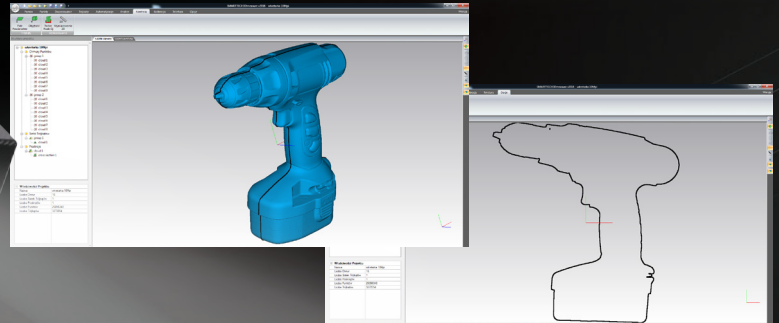
# MICRON3D

color 10Mpix

High-resolution, ultra-precise 3D scanner  
certified according to VDI/VDE standard.



**WHITE LED light  
technology**



**Perfect measuring machine for industry.  
New generation of optical CMM.**

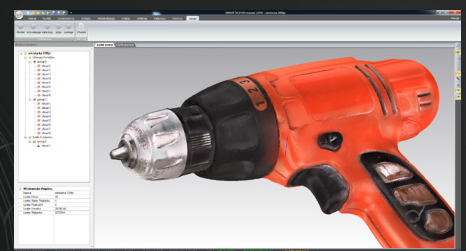
The new MICRON3D color 10MPix provides resolution of up to 400 points/mm<sup>2</sup> and acquires texture of the object in each measurement point (X,Y,Z with RGB).

Measurement accuracy up to 0.015 mm.

User-friendly SMARTTECH3Dmeasure software enables a quick start and guarantees optimal data processing even for non-professionals.

Software enables advanced and automated data post-processing such as advanced cloud of points or triangle mesh edition.

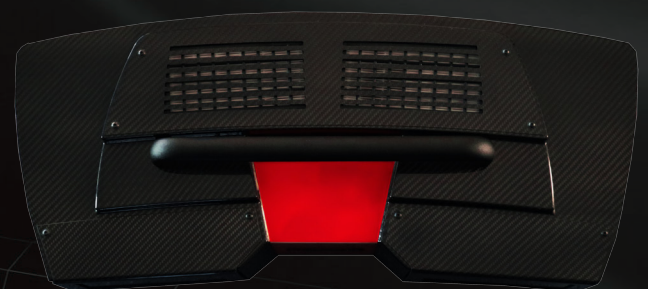
Due to large amounts of collected data the environment has been designed for seamless work with data exceeding 200 million points, which gives user the freedom to choose a level of detail he wants to work on.



Colour information used in industry  
gives more control possibilities  
(cracks visible only on texture)

Technical advantages:

- Highest quality components
- German high resolution and sensitive color sensors
- Precise measurement up to 15 µm accuracy.
- Full carbon fiber housing



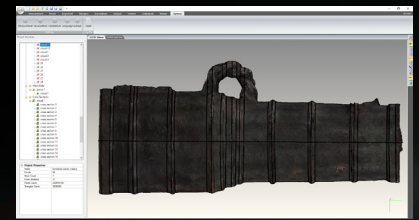
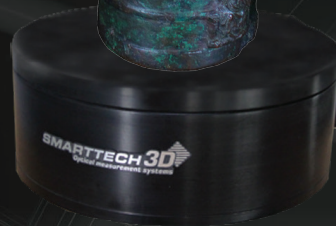


First metrology certified 3D digitizer giving accurate information about shape and color of measured object.

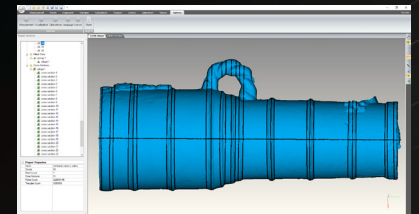


Integration with optional shadeless system ensures realistic texture

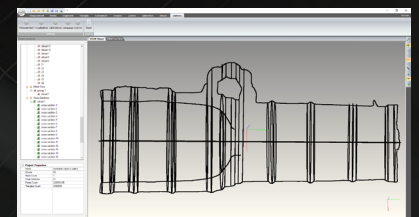
Metrologically reliable digitiser with ability to measure shape and color of objects. MICRON3D color 10Mpix has ability to scan dark and shiny surfaces. The result of scanning is a color model with texture (cloud of points X,Y,Z with RGB).



Results as cloud of points



Virtual cross-sections



Scanned object:  
XV century cannon, courtesy  
of Castle Museum in Malbork, Poland

Technical specification	5 Mpix				10 Mpix			
Scanning technology	White structural light - LED				White structural light - LED			
Measuring field [mm <sup>2</sup> ]	150 x 200	200 x 300	300 x 400	400 x 600	150 x 200	200 x 300	300 x 400	400 x 600
Distance between points [mm]	0,078	0,117	0,156	0,234	0,052	0,078	0,104	0,156
Sampling [points/mm <sup>2</sup> ]	164	73	41	18	369	164	92	41
Accuracy [mm]	0,015	0,040	0,060	0,080	0,015	0,040	0,060	0,080

#### Optional accesories:

Easy & fast change of measurement volume  
with exchangable lenses



#### Automated rotary stages:

- max load 15kg, 200mm diameter
- max load 60kg, 500mm diameter
- max load 300kg, 500mm diameter



Waterproof  
transportation case



Automatic Shadeless  
Lighting System