

SCORPION STINGER LEDBAR™

SCOPE

Scorpion Stinger LEDbars are designed to be used in machine vision applications. The white light LEDbar-200 typically replaces one halogen lamp. The Scorpion Stinger LEDbars has the following advantages:

- Industrial package
- Easy to mount
- 24 Volt power supply
- Dimmer input
- Fast delivery ex-stock
- Low power consumption
- Long life-time
- Reduced system operation cost

The aluminium LEDbar acts like a superb heatsink that secures long lifetime of the unit.

The LEDbar 200-1-IR can be used when day and night operation is required or when you want to secure immunity to white light variations.

The LEDbars can be customized with different lenses that focus the light where it is needed.

The Scorpion Stinger LEDbars are compatible with the Scorpion Compact Vision Systems.

SCORPION STINGER LEDBAR 200MM ARTICLE NO 90-580-200-N

Aluminium LEDbar 200 mm

- 24 V pwr supply
- One 3W power white LED
- 24,2° or 33,5° opening angle
- Dimension L=300 x W=40 x H=30 mm

SCORPION STINGER LEDBAR IR 200MM ARTICLE NO 90-581-200-N

Aluminium LEDbar 200 mm

- 24 V power supply
- One 9 W IR-LED
- 33,5° or 140° opening angle
- Dimension L=200 x W=40 x H=30 mm

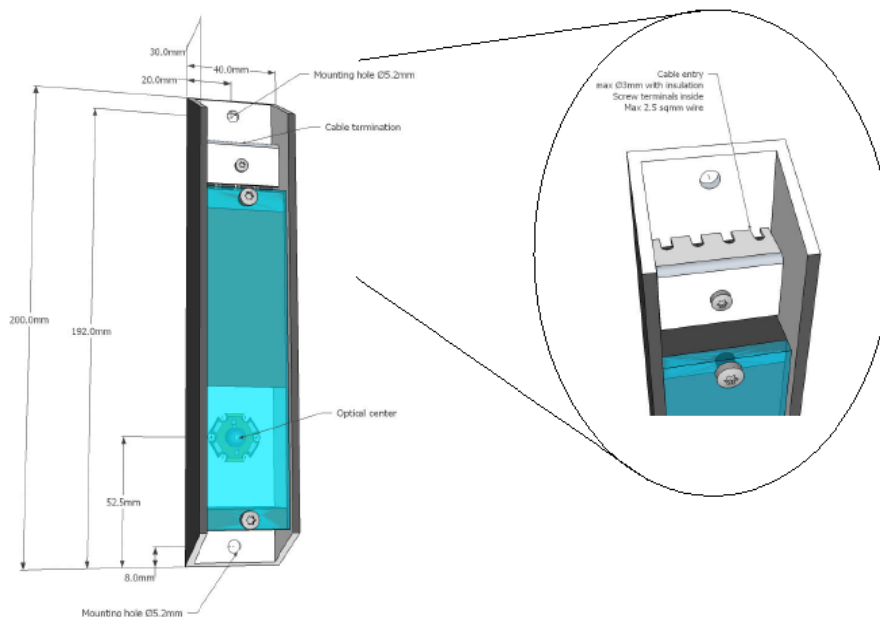
We recommend strobing IR light to reduce heat dissipation and to eliminate IR light safety hazards.



Scorpion Stinger LEDbar-200-1-33



Scorpion Stinger LEDbar-200-1-IR



Scorpion Stinger LEDbar-200 layout

For more information:



TORDIVEL

Tordivel AS
Phone +47 2315 8700
Fax +47 2315 8701
office@tordivel.com
www.scorpionvision.com

Scorpion Stinger LEDbar™ is a trademark of Tordivel AS. © 2012-2014 Tordivel AS
PD-2013-0004-C Scorpion Stinger LEDbar



Scorpion Stinger LEDbar-200 connector

The Scorpion Stinger LEDbars have four connectors:

- Input GND
- Input 24V
- DIM 0-10V
- DIM 0V

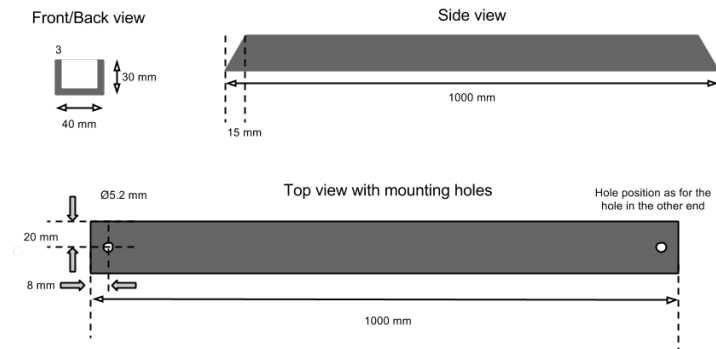
The DIM connectors are used when strobing the light. They can be connected to the EXPO output of the Scorpion 2D or 3D Stinger Cameras.



SCORPION STINGER LEDBAR 1000MM
ARTICLE NO 90-580-1000-N

Aluminium LEDbar 1000 mm

- 24 V power supply
- 3 x LED strips 6
- 8x25°, 10° or 40° opening angles
- Dimension L=1000 x W=40 x H=30 mm

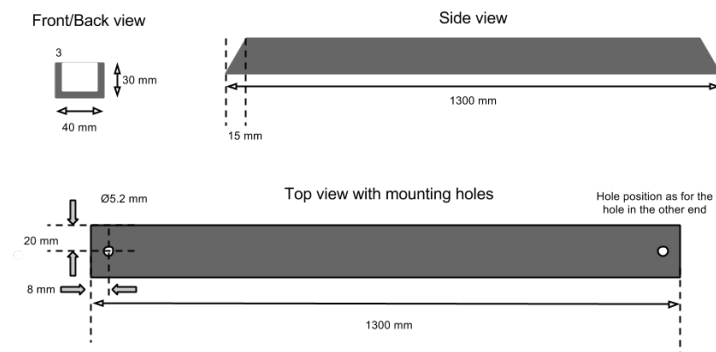


Scorpion Stinger LEDbar 1000 mounting details

SCORPION STINGER LEDBAR 1300MM
ARTICLE NO 90-580-1300-N

Aluminium LEDbar 1300 mm

- 24 V power supply
- 4 x LED strips 6
- 8x25°, 10° or 40° opening angles
- Dimension L=1300 x W=40 x H=30 mm



Scorpion Stinger LEDbar 1300 mounting details

SCORPION STINGER LEDSPOT
ARTICLE NO 90-585-N, 90-586-N

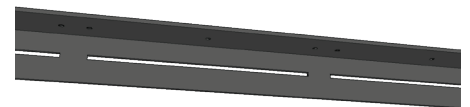
Aluminium LEDspot

- 5V input power
- One 3W white power LED or 9W IR LED
- 24,2° or 33,5° opening angle
- Dimension L= 60mm W= 30mm
H= 30mm
- Bracket dimension L= 70mm W= 35mm
H= 32mm



Scorpion Stinger LEDspot

The Scorpion Stinger LEDspot is a perfect companion to the Scorpion 2D Stinger Camera when extra light is needed.



Scorpion Stinger LEDrail for LEDspot line mounting is available in custom length.

LEDBARS AND LEDSPOTS SPECIFICATION

Article #	Number of LEDs	Pitch	N=Lens angle	LED type	M=LED driver	Mounting holes distance	Mounting hole diameter
90-580-200-N-M	1		24° 33°	White	1000 2100mA	184 mm	5,2 mm
90-581-200-N-M	1		33° 140°	IR	1000 2100mA	184 mm	5,2 mm
90-580-1000-N	18	50 mm	8x25° 10° 40°	White		984 mm	5,2 mm
90-580-1300-N	24	50 mm	8x25° 10° 40°	White		1284 mm	5,2 mm
90-585-N	1		24° 33°	White		15 mm	3,5 mm
90-586-N	1		24° 33°	IR		15 mm	3,5 mm

PD-2013-0004-C Scorpion Stinger LEDbar