

JC1MS Series

Vertrieb durch:
Polytec GmbH
Polytec Platz 1-7
D-76337 Waldbronn

Tel: +49(0)7243 / 604-1800
Fax: +49(0)7243 / 69944
E-Mail: bv@polytec.de
www.polytec.de/bv



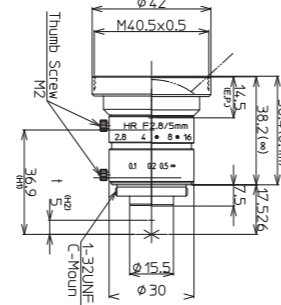
Compatible Suitable Incompatible

Model	Format Size(Inch)							
	4/3	1.1	1	1/1.2	2/3	1/1.8	1/2	1/3
LM5JCM	-	-	-	-	-	-	-	-
LM8JC1MS	-	-	-	-	-	✓	✓	✓
LM12JC1MS	-	-	-	-	-	✓	✓	✓
LM16JC1MS	-	-	-	-	-	✓	✓	✓
LM25JC1MS	-	-	-	-	-	✓	✓	✓
LM35JC1MS	-	-	◇	◇	◇	✓	✓	✓
LM50JC1MS	-	-	◇	◇	◇	✓	✓	✓
LM75JC1MS	-	-	◇	◇	◇	✓	✓	✓
LM100JC1MS	-	-	◇	◇	◇	✓	✓	✓

Features of JC1MS Series

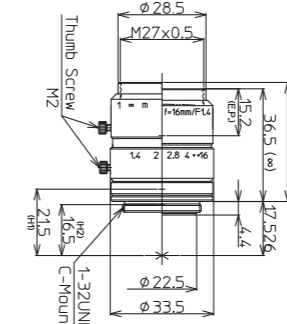
- ▶ World standard and popular lens series
- ▶ Excellent corner brightness
- ▶ Low distortion
- ▶ For megapixel applications
- ▶ High resolution

LM5JCM



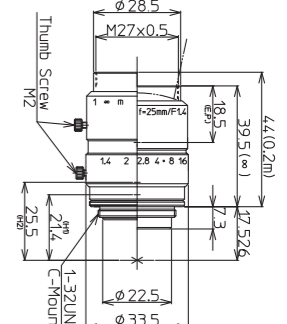
2/3" 5mm METAL LO-DIS
Metal Body Low Distortion

LM16JC1MS



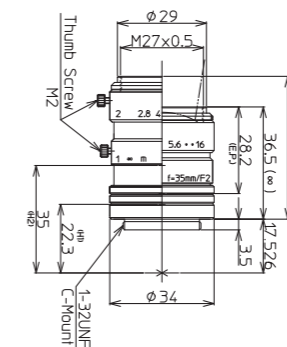
2/3" 16mm METAL LO-DIS FLOAT
Metal Body Low Distortion Floating

LM25JC1MS



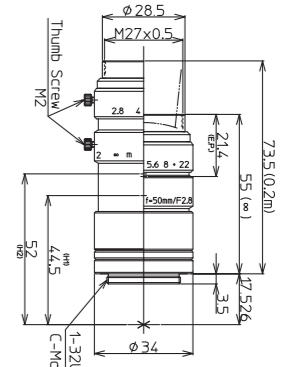
2/3" 25mm METAL FLOAT
Metal Body Floating

LM35JC1MS



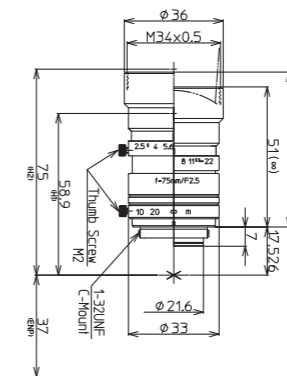
2/3" 35mm METAL FLOAT
Metal Body Floating

LM50JC1MS



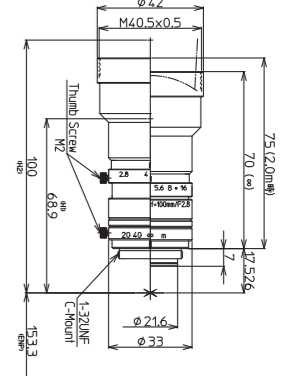
2/3" 50mm METAL FLOAT
Metal Body Floating

LM75JC1MS



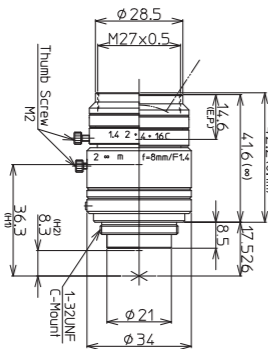
2/3" 75mm METAL FLOAT
Metal Body Floating

LM100JC1MS



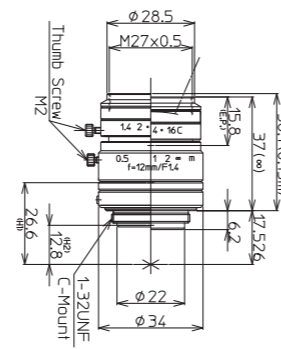
2/3" 100mm METAL FLOAT
Metal Body Floating

LM8JC1MS



2/3" 8mm METAL LO-DIS
Metal Body Low Distortion

LM12JC1MS



2/3" 12mm METAL LO-DIS
Metal Body Low Distortion

Model	LM5JCM	LM8JC1MS	LM12JC1MS
Focal Length(mm)	5	8	12
Image Size(mm)	8.8×6.6(Φ11)	8.8×6.6(Φ11)	8.8×6.6(Φ11)
Iris Range(F-stop)	F2.8-F16	F1.4-Close	F1.4-Close
Focusing Range(m)	0.1~∞	0.1~∞	0.15~∞
Control	Iris: Manual Focus: Manual	Manual	Manual
Shooting Range at M.O.D.(mm)	200.8(H)×150.8(V)	120.3(H)×90.0(V)	110.0(H)×82.5(V)
Angle of View	2/3 Inch: 82.4×66.9 1/1.8 Inch: 71.7×57.1 (Degrees) 1/2 Inch: 65.2×51.3	56.5×43.9 47.4×36.3 42.6×32.5	38.3×29.1 31.7×24.0 28.3×21.4
Resolution(Center, Corner)	120lp/mm, 100lp/mm	120lp/mm, 100lp/mm	120lp/mm, 100lp/mm
TV Distortion(%)	0.5	-0.6	-0.07
Back Focus in Air(mm)	10.0	9.74	11.7
Mount	C-mount	C-mount	C-mount
Filter Thread(mm)	M40.5×P0.5	M27×P0.5	M27×P0.5
Size(mm)(∞)	Φ42×38.2	Φ34×41.6	Φ34×37
Weight(g)	84	90	85
Temperature Range	-10°C~+50°C	-10°C~+50°C	-10°C~+50°C

Diagram of M.O.D. / Magnification Using A Close Up Ring

Model	LM5JCM	LM8JC1MS	LM12JC1MS	LM16JC1MS	LM25JC1MS	LM35JC1MS	LM50JC1MS	LM75JC1MS	LM100JC1MS
(Non)M.O.D./Magnification	100mm/0.04×	100mm/0.07×	150mm/0.08×	200mm/0.08×	200mm/0.12×	200mm/0.18×	200mm/0.30×	1200mm/0.07×	2000mm/0.05×
(1mm Ring)M.O.D./Magnification	-	30mm/0.20×	70mm/0.16×	110mm/0.14×	150mm/0.16×	175mm/0.21×	190mm/0.32×	1010mm/0.08×	1700mm/0.06×
(5mm Ring)M.O.D./Magnification	-	-	-	-	73mm/0.31×	115mm/0.32×	160mm/0.39×	630mm/0.13×	1060mm/0.10×
(10mm Ring)M.O.D./Magnification	-	-	-	-	-	81mm/0.46×	135mm/0.48×	440mm/0.20×	740mm/0.15×
(20mm Ring)M.O.D./Magnification	-	-	-	-	-	51mm/0.73×	105mm/0.65×	285mm/0.34×	480mm/0.25×

Model	LM16JC1MS	LM25JC1MS	LM35JC1MS	LM50JC1MS	LM75JC1MS	LM100JC1MS
Focal Length(mm)	16	25	35	50	75	100
Image Size(mm)	8.8×6.6(Φ11)	8.8×6.6(Φ11)	8.8×6.6(Φ11)	8.8×6.6(Φ11)	8.8×6.6(Φ11)	8.8×6.6(Φ11)
Iris Range(F-stop)	F1.4-F16	F1.4-F16	F2.0-F16	F2.8-F22	F2.5-F22	F2.8-F32
Focusing Range(m)	0.2~∞	0.2~∞	0.2~∞	0.2~∞	1.2~∞	2.0~∞
Control	Iris: Manual Focus: Manual	Manual	Manual	Manual	Manual	Manual
Shooting Range at M.O.D.(mm)	112.8(H)×84.4(V)	71.1(H)×53.3(V)	47.9(H)×35.8(V)	29.3(H)×21.9(V)	132.6(H)×99.6(V)	168.8(H)×126.6(V)
Angle of View	2/3 Inch: 30.0×22.7 1/1.8 Inch: 24.7×18.6 (Degrees) 1/2 Inch: 21.8×16.4	19.6×14.8 16.1×12.1 14.0×10.5	14.4×10.8 11.8×8.8 10.5×7.9	9.6×7.2 7.9×5.9 7.0×5.2	6.7×5.0 5.5×4.1 4.9×3.7	6.7×5.0 5.5×4.1 4.1×3.1 3.7×2.8
Resolution(Center, Corner)	120lp/mm, 100lp/mm	120lp/mm, 100lp/mm	120lp/mm, 100lp/mm	120lp/mm, 100lp/mm	100lp/mm, 80lp/mm	100lp/mm, 80lp/mm
TV Distortion(%)	-0.05	-0.04	-0.2	-0.03	-0.1	-0.05
Back Focus in Air(mm)	13.1	11.7	20.1	35.5	18.0	19.0
Mount	C-mount	C-mount	C-mount	C-mount	C-mount	C-mount
Filter Thread(mm)	M27×P0.5	M27×P0.5	M27×P0.5	M27×P0.5	M34×P0.5	M40.5×P0.5
Size(mm)(∞)	Φ33.5×36.5	Φ33.5×39.5	Φ34×36.5	Φ34×55	Φ36×51	Φ42×70
Weight(g)	85	90	70	95	105	145
Temperature Range	-10°C~+50°C	-10°C~+50°C	-10°C~+50°C	-10°C~+50°C	-10°C~+50°C	-10°C~+50°C

† Images may differ from the actual product.

† Images may differ from the actual product.