

DTCM230 Series

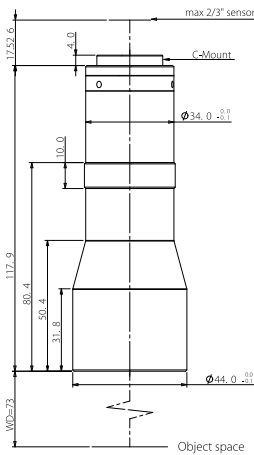
Support 2/3"

Cameras



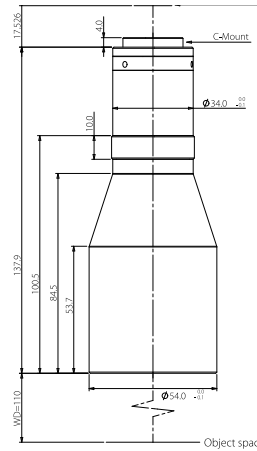
Lens Model	FOV (Φmm)	Mag. β(x)	WD (mm)	Sensor Size (Φmm)	F/#	MTF30 (lp/mm)	DOF (mm)	Distortion (% max)	Telecentricity (° max)	I/O (mm)	Length (mm)	Mount	Weight (kg)
DTCM230-26	26	0.438	73±1	11.4(2/3")	6.0	>130	±2.3@F11	<0.1	<0.1	208±1	117.9	C	0.3
DTCM230-36	36	0.317	110±2	11.4(2/3")	5.4	>145	±4.3@F11	<0.1	<0.1	265±2	137.9	C	0.4
DTCM230-42	42	0.271	118±3	11.4(2/3")	4.9	>185	±6.0@F11	<0.1	<0.1	259±3	123.4	C	0.4
DTCM230-48	48	0.238	128±3	11.4(2/3")	5.4	>165	±7.7@F11	<0.1	<0.1	282±3	136.9	C	0.5
DTCM230-56-AL	56	0.204	138±3	11.4(2/3")	4.9	>180	±10.5@F11	<0.1	<0.1	315±3	159.5	C	0.7
DTCM230-64H-AL	64	0.178	158±3	11.4(2/3")	4.9	>180	±13.9@F11	<0.1	<0.1	348±3	172.0	C	0.8
DTCM230-72-AL	72	0.158	178±3	11.4(2/3")	4.9	>180	±17.6@F11	<0.1	<0.1	388±3	192.0	C	1.0
DTCM230-80H-AL	80	0.142	228±4	11.4(2/3")	4.9	>180	±21.7@F11	<0.1	<0.1	428±4	182.0	C	1.9
DTCM230-90-AL	90	0.127	208±3	11.4(2/3")	4.9	>180	±27.2@F11	<0.1	<0.1	443±3	217.0	C	1.7
DTCM230-100-AL	100	0.114	258±4	11.4(2/3")	5.4	>170	±33.8@F11	<0.1	<0.1	516±4	240.4	C	3.1
DTCM230-110-AL	110	0.104	263±4	11.4(2/3")	4.9	>190	±40.7@F11	<0.1	<0.1	550±4	269.6	C	2.7
DTCM230-120-AL	120	0.095	280±5	11.4(2/3")	4.9	>185	±48.7@F11	<0.1	<0.1	578±5	280.7	C	4.2
DTCM230-136-AL	136	0.084	288±5	11.4(2/3")	4.9	>185	±62.4@F11	<0.1	<0.1	659±5	354.6	C	-
DTCM230-150-AL	150	0.076	300±5	11.4(2/3")	4.9	>185	±76.1@F11	<0.1	<0.1	642±5	324.0	C	5.7
DTCM230-170-AL	170	0.067	318±5	11.4(2/3")	4.9	>180	±98@F11	<0.1	<0.1	721±5	385.9	C	6.5
DTCM230-190-AL	190	0.060	330±5	11.4(2/3")	4.9	>180	±122@F11	<0.1	<0.1	761±5	413.2	C	11.0
DTCM230-216-AL	216	0.053	372±5	11.4(2/3")	4.9	>180	±157@F11	<0.1	<0.1	898±5	508.7	C	13.7
DTCM230-240H-AL	240	0.048	410±6	11.4(2/3")	4.9	>180	±195@F11	<0.1	<0.1	982±6	554.5	C	19.3
DTCM230-268-AL	268	0.043	438±6	11.4(2/3")	4.9	>180	±238@F11	<0.1	<0.1	1097±6	642	C	-
DTCM230-300-AL	300	0.038	465±6	11.4(2/3")	4.9	>180	±304@F11	<0.1	<0.1	1116±6	633.0	C	46.6

DTCM230-26



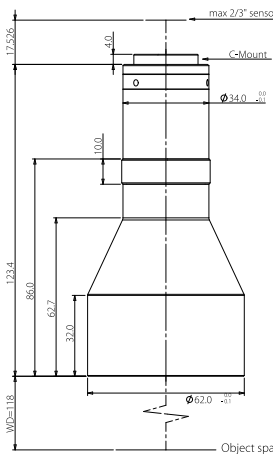
FOV(Φmm)	26
Mag.(x)	0.438
WD(mm)	73±1
Max Sensor Size(Φmm)	11.4(2/3")
F/#	6.0
MTF30(lp/mm)	>130
DOF(mm)	±2.3@F11
Distortion(% max)	<0.1
Telecentricity(° max)	<0.1
I/O(mm)	208±1
Length(mm)	117.9
Mount	C-Mount
Weight(kg)	0.3
Field of View (mmxmm)	2/3" ICX625/655 8.47x7.1 19.3x16.2

DTCM230-36



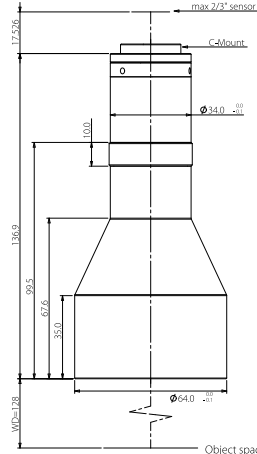
FOV(Φmm)	36
Mag.(x)	0.317
WD(mm)	110±2
Max Sensor Size(Φmm)	11.4(2/3")
F/#	5.4
MTF30(lp/mm)	>145
DOF(mm)	±4.3@F11
Distortion(% max)	<0.1
Telecentricity(° max)	<0.1
I/O(mm)	265±2
Length(mm)	137.9
Mount	C-Mount
Weight(kg)	0.4
Field of View (mmxmm)	2/3" ICX625/655 8.47x7.1 26.7x22.4

DTCM230-42



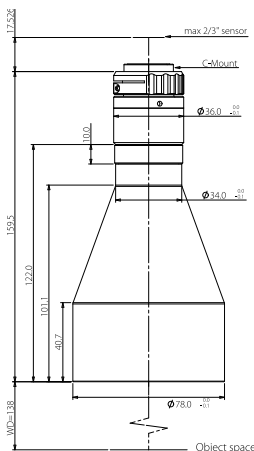
FOV(Φmm)	42
Mag.(x)	0.271
WD(mm)	118±3
Max Sensor Size(Φmm)	11.4(2/3")
F/#	4.9
MTF30(lp/mm)	>185
DOF(mm)	±6.0@F11
Distortion(% max)	<0.1
Telecentricity(° max)	<0.1
I/O(mm)	259±3
Length(mm)	123.4
Mount	C-Mount
Weight(kg)	0.4
Field of View (mmxmm)	2/3" ICX625/655 8.47x7.1 31.3x26.2

DTCM230-48



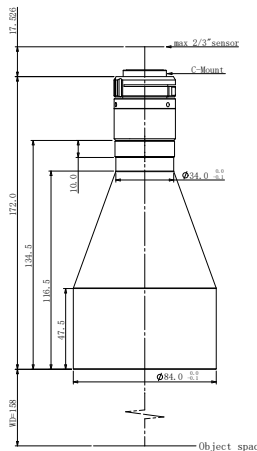
FOV(Φmm)	48
Mag.(x)	0.238
WD(mm)	128±3
Max Sensor Size(Φmm)	11.4(2/3")
F/#	5.4
MTF30(lp/mm)	>165
DOF(mm)	±7.7@F11
Distortion(% max)	<0.1
Telecentricity(° max)	<0.1
I/O(mm)	282±3
Length(mm)	136.9
Mount	C-Mount
Weight(kg)	0.5
Field of View (mmxmm)	2/3" ICX625/655 8.47x7.1 35.6x29.8

DTCM230-56-AL



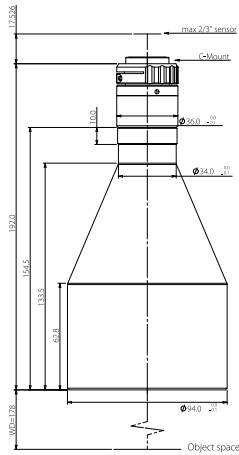
FOV(Φmm)	56
Mag.(x)	0.204
WD(mm)	138±3
Max Sensor Size(Φmm)	11.4(2/3")
F/#	4.9
MTF30(lp/mm)	>180
DOF(mm)	±10.5@F11
Distortion(% max)	<0.1
Telecentricity(° max)	<0.1
I/O(mm)	315±3
Length(mm)	159.5
Mount	C-Mount
Weight(kg)	0.7
Field of View (mmxmm)	2/3" ICX625/655 8.47x7.1 41.5x34.8

DTCM230-64H-AL



FOV(Φmm)	64
Mag.(x)	0.178
WD(mm)	158±3
Max Sensor Size(Φmm)	11.4(2/3")
F/#	4.9
MTF30(lp/mm)	>180
DOF(mm)	±13.9@F11
Distortion(% max)	<0.1
Telecentricity(° max)	<0.1
I/O(mm)	348±3
Length(mm)	172.0
Mount	C-Mount
Weight(kg)	0.8
Field of View (mmxmm)	2/3" ICX625/655 8.47x7.1 47.6x39.9

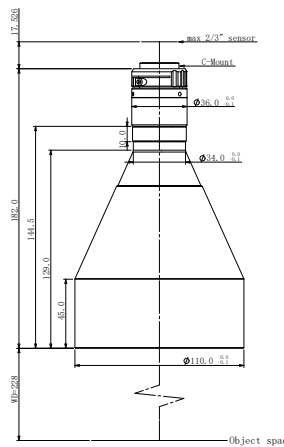
DTCM230-72-AL



FOV(Φmm)	72
Mag.(x)	0.158
WD(mm)	178±3
Max Sensor Size(Φmm)	11.4(2/3")
F/#	4.9
MTF30(lp/mm)	>180
DOF(mm)	±17.6@F11
Distortion(% max)	<0.1
Telecentricity(° max)	<0.1
I/O(mm)	388±3
Length(mm)	192.0
Mount	C-Mount
Weight(kg)	1.0

Field of View (mmxmm)
2/3" ICX625/655 8.47x7.1 53.6x44.9

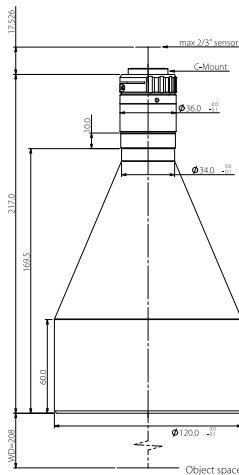
DTCM230-80H-AL



FOV(Φmm)	80
Mag.(x)	0.142
WD(mm)	228±4
Max Sensor Size(Φmm)	11.4(2/3")
F/#	4.9
MTF30(lp/mm)	>180
DOF(mm)	±21.7@F11
Distortion(% max)	<0.1
Telecentricity(° max)	<0.1
I/O(mm)	428±4
Length(mm)	182.0
Mount	C-Mount
Weight(kg)	1.9

Field of View (mmxmm)
2/3" ICX625/655 8.47x7.1 59.6x50.0

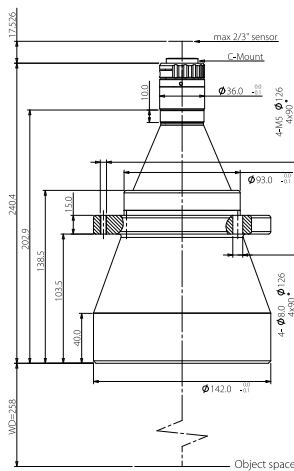
DTCM230-90-AL



FOV(Φmm)	90
Mag.(x)	0.127
WD(mm)	208±3
Max Sensor Size(Φmm)	11.4(2/3")
F/#	4.9
MTF30(lp/mm)	>180
DOF(mm)	±27.2@F11
Distortion(% max)	<0.1
Telecentricity(° max)	<0.1
I/O(mm)	443±3
Length(mm)	217.0
Mount	C-Mount
Weight(kg)	1.7

Field of View (mmxmm)
2/3" ICX625/655 8.47x7.1 66.7x55.9

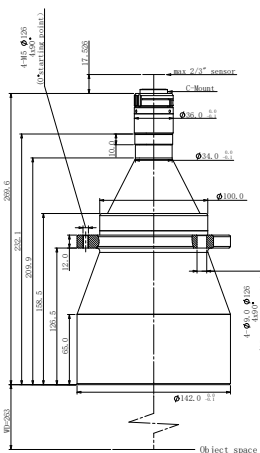
DTCM230-100-AL



FOV(Φmm)	100
Mag.(x)	0.114
WD(mm)	258±4
Max Sensor Size(Φmm)	11.4(2/3")
F/#	5.4
MTF30(lp/mm)	>170
DOF(mm)	±33.8@F11
Distortion(% max)	<0.1
Telecentricity(° max)	<0.1
I/O(mm)	516±4
Length(mm)	240.4
Mount	C-Mount
Weight(kg)	3.1

Field of View (mmxmm)
2/3" ICX625/655 8.47x7.1 74.3x62.3

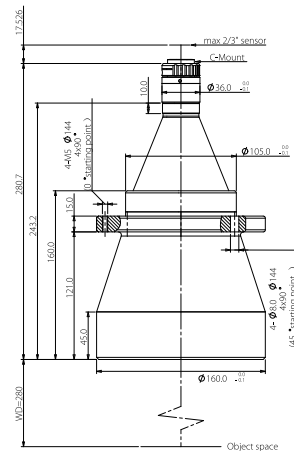
DTCM230-110-AL



FOV(Φmm)	110
Mag.(x)	0.104
WD(mm)	263±4
Max Sensor Size(Φmm)	11.4(2/3")
F/#	4.9
MTF30(lp/mm)	>190
DOF(mm)	±40.7@F11
Distortion(% max)	<0.1
Telecentricity(° max)	<0.1
I/O(mm)	550±4
Length(mm)	269.6
Mount	C-Mount
Weight(kg)	2.7

Field of View (mmxmm)
2/3" ICX625/655 8.47x7.1 81.4x68.3

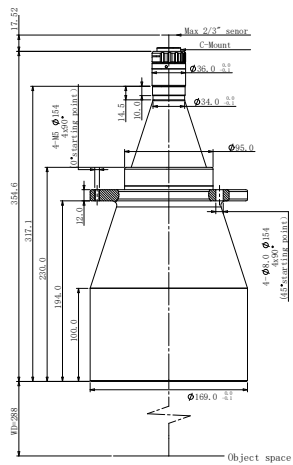
DTCM230-120-AL



FOV(Φmm)	120
Mag.(x)	0.095
WD(mm)	280±5
Max Sensor Size(Φmm)	11.4(2/3")
F/#	4.9
MTF30(lp/mm)	>185
DOF(mm)	±48.7@F11
Distortion(% max)	<0.1
Telecentricity(° max)	<0.1
I/O(mm)	578±5
Length(mm)	280.7
Mount	C-Mount
Weight(kg)	4.2

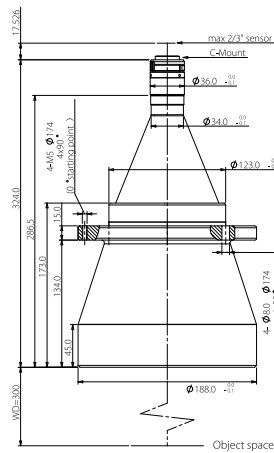
Field of View (mmxmm)
2/3" ICX625/655 8.47x7.1 89.2x74.7

DTCM230-136-AL



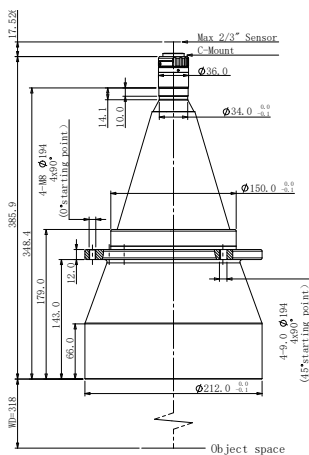
FOV(Φmm)	136
Mag.(x)	0.084
WD(mm)	288±5
Max Sensor Size(Φmm)	11.4(2/3")
F/#	4.9
MTF30(lp/mm)	>185
DOF(mm)	±62.4@F11
Distortion(% max)	<0.1
Telecentricity(° max)	<0.1
I/O(mm)	659±5
Length(mm)	354.6
Mount	C-Mount
Weight(kg)	-
Field of View (mmxmm)	2/3" ICX625/655 8.47x7.1 100.8x84.5

DTCM230-150-AL



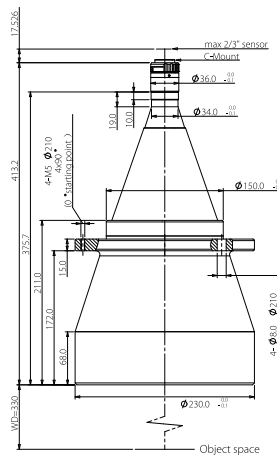
FOV(Φmm)	150
Mag.(x)	0.076
WD(mm)	300±5
Max Sensor Size(Φmm)	11.4(2/3")
F/#	4.9
MTF30(lp/mm)	>185
DOF(mm)	±76.1@F11
Distortion(% max)	<0.1
Telecentricity(° max)	<0.1
I/O(mm)	642±5
Length(mm)	324.0
Mount	C-Mount
Weight(kg)	5.7
Field of View (mmxmm)	2/3" ICX625/655 8.47x7.1 111.4x93.4

DTCM230-170-AL



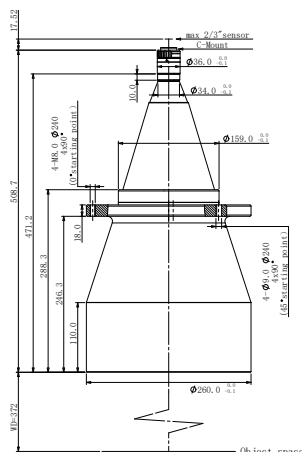
FOV(Φmm)	170
Mag.(x)	0.067
WD(mm)	318±5
Max Sensor Size(Φmm)	11.4(2/3")
F/#	4.9
MTF30(lp/mm)	>180
DOF(mm)	±98@F11
Distortion(% max)	<0.1
Telecentricity(° max)	<0.1
I/O(mm)	721±5
Length(mm)	385.9
Mount	C-Mount
Weight(kg)	6.5
Field of View (mmxmm)	2/3" ICX625/655 8.47x7.1 126.4x106.0

DTCM230-190-AL



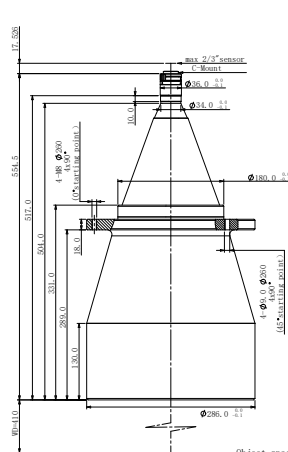
FOV(Φmm)	190
Mag.(x)	0.060
WD(mm)	330±5
Max Sensor Size(Φmm)	11.4(2/3")
F/#	4.9
MTF30(lp/mm)	>180
DOF(mm)	±122@F11
Distortion(% max)	<0.1
Telecentricity(° max)	<0.1
I/O(mm)	761±5
Length(mm)	413.2
Mount	C-Mount
Weight(kg)	11.0
Field of View (mmxmm)	2/3" ICX625/655 8.47x7.1 141.2x118.3

DTCM230-216-AL



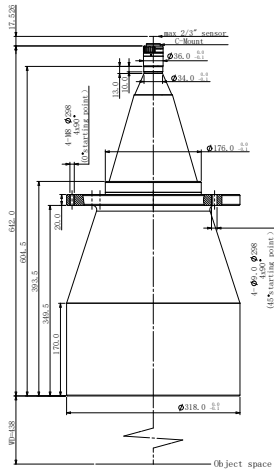
FOV(Φmm)	216
Mag.(x)	0.053
WD(mm)	372±5
Max Sensor Size(Φmm)	11.4(2/3")
F/#	4.9
MTF30(lp/mm)	>180
DOF(mm)	±157@F11
Distortion(% max)	<0.1
Telecentricity(° max)	<0.1
I/O(mm)	898±5
Length(mm)	508.7
Mount	C-Mount
Weight(kg)	13.7
Field of View (mmxmm)	2/3" ICX625/655 8.47x7.1 159.8x134.0

DTCM230-240H-AL



FOV(Φmm)	240
Mag.(x)	0.048
WD(mm)	410±6
Max Sensor Size(Φmm)	11.4(2/3")
F/#	4.9
MTF30(lp/mm)	>180
DOF(mm)	±195@F11
Distortion(% max)	<0.1
Telecentricity(° max)	<0.1
I/O(mm)	982±6
Length(mm)	554.5
Mount	C-Mount
Weight(kg)	19.3
Field of View (mmxmm)	2/3" ICX625/655 8.47x7.1 176.5x147.9

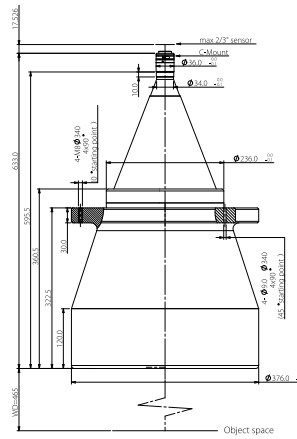
DTCM230-268-AL



FOV(Φmm)	268
Mag.(x)	0.043
WD(mm)	438±6
Max Sensor Size(Φmm)	11.4(2/3")
F/#	4.9
MTF30(lp/mm)	>180
DOF(mm)	±238@F11
Distortion(% max)	<0.1
Telecentricity(° max)	<0.1
I/O(mm)	1097±6
Length(mm)	642.0
Mount	C-Mount
Weight(kg)	-

Field of View (mmxmm)	2/3" ICX625/655	8.47x7.1	197.0x165.1
-----------------------	-----------------	----------	-------------

DTCM230-300-AL



FOV(Φmm)	300
Mag.(x)	0.038
WD(mm)	465±6
Max Sensor Size(Φmm)	11.4(2/3")
F/#	4.9
MTF30(lp/mm)	>180
DOF(mm)	±304@F11
Distortion(% max)	<0.1
Telecentricity(° max)	<0.1
I/O(mm)	1116±6
Length(mm)	633.0
Mount	C-Mount
Weight(kg)	46.6

Field of View (mmxmm)	2/3" ICX625/655	8.47x7.1	222.9x186.8
-----------------------	-----------------	----------	-------------