

DTCM118 Series

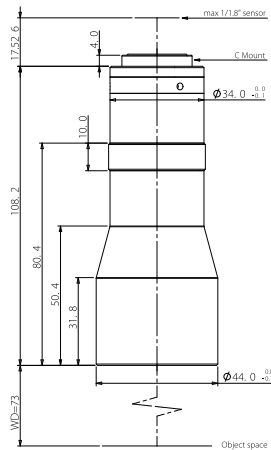
Support 1/1.8"

Cameras



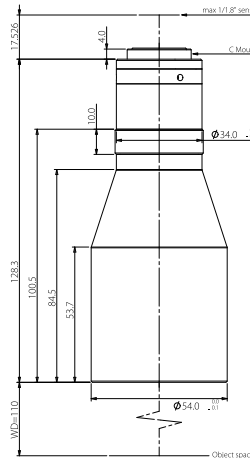
| Lens Model | FOV (°mm) | Mag. β(x) | WD (mm) | Sensor Size (Φmm) | F/# | MTF30 (lp/mm) | DOF (mm) | Distortion (% max) | Telecentricity (° max) | I/O (mm) | Length (mm) | Mount | Weight (kg) |
|-----------------|-----------|-----------|---------|-------------------|-----|---------------|-----------|--------------------|------------------------|----------|-------------|-------|-------------|
| DTCM118-26 | 26 | 0.346 | 73±1 | 9.0(1/1.8") | 4.6 | >170 | ±3.7@F11 | <0.1 | <0.1 | 199±1 | 108.2 | C | 0.3 |
| DTCM118-36 | 36 | 0.250 | 110±2 | 9.0(1/1.8") | 4.6 | >180 | ±7.0@F11 | <0.1 | <0.1 | 256±2 | 128.3 | C | 0.4 |
| DTCM118-42 | 42 | 0.214 | 118±3 | 9.0(1/1.8") | 4.6 | >195 | ±9.6@F11 | <0.1 | <0.1 | 249±3 | 113.8 | C | 0.4 |
| DTCM118-48 | 48 | 0.188 | 128±3 | 9.0(1/1.8") | 4.6 | >190 | ±12.4@F11 | <0.1 | <0.1 | 273±3 | 127.3 | C | 0.4 |
| DTCM118-56-AL | 56 | 0.161 | 138±3 | 9.0(1/1.8") | 4.6 | >190 | ±17.0@F11 | <0.1 | <0.1 | 306±3 | 149.9 | C | 0.7 |
| DTCM118-64H-AL | 64 | 0.141 | 158±3 | 9.0(1/1.8") | 4.6 | >195 | ±22.3@F11 | <0.1 | <0.1 | 338±3 | 162.4 | C | 0.8 |
| DTCM118-72-AL | 72 | 0.125 | 178±3 | 9.0(1/1.8") | 4.6 | >195 | ±28.1@F11 | <0.1 | <0.1 | 378±3 | 182.4 | C | 1.0 |
| DTCM118-80H-AL | 80 | 0.113 | 228±4 | 9.0(1/1.8") | 4.6 | >195 | ±34.8@F11 | <0.1 | <0.1 | 418±4 | 172.4 | C | 1.9 |
| DTCM118-90-AL | 90 | 0.100 | 208±3 | 9.0(1/1.8") | 4.6 | >195 | ±44@F11 | <0.1 | <0.1 | 433±3 | 207.4 | C | 1.7 |
| DTCM118-100-AL | 100 | 0.090 | 258±4 | 9.0(1/1.8") | 4.6 | >190 | ±54.3@F11 | <0.1 | <0.1 | 506±4 | 230.8 | C | 3.0 |
| DTCM118-110-AL | 110 | 0.082 | 263±4 | 9.0(1/1.8") | 4.6 | >200 | ±65.4@F11 | <0.1 | <0.1 | 541±4 | 260.0 | C | 2.7 |
| DTCM118-120-AL | 120 | 0.075 | 280±5 | 9.0(1/1.8") | 4.6 | >190 | ±78.2@F11 | <0.1 | <0.1 | 569±5 | 271.1 | C | 4.2 |
| DTCM118-136-AL | 136 | 0.066 | 288±5 | 9.0(1/1.8") | 4.6 | >200 | ±101@F11 | <0.1 | <0.1 | 651±5 | 345 | C | - |
| DTCM118-150-AL | 150 | 0.060 | 300±5 | 9.0(1/1.8") | 4.6 | >195 | ±122@F11 | <0.1 | <0.1 | 632±5 | 314.4 | C | 5.7 |
| DTCM118-170-AL | 170 | 0.053 | 318±5 | 9.0(1/1.8") | 4.6 | >200 | ±157@F11 | <0.1 | <0.1 | 712±5 | 376.3 | C | 6.5 |
| DTCM118-190-AL | 190 | 0.047 | 330±5 | 9.0(1/1.8") | 4.6 | >195 | ±199@F11 | <0.1 | <0.1 | 751±5 | 403.6 | C | 11.0 |
| DTCM118-216-AL | 216 | 0.042 | 372±5 | 9.0(1/1.8") | 4.6 | >200 | ±249@F11 | <0.1 | <0.1 | 889±5 | 499.1 | C | 13.7 |
| DTCM118-240H-AL | 240 | 0.038 | 410±6 | 9.0(1/1.8") | 4.6 | >200 | ±313@F11 | <0.1 | <0.1 | 972±6 | 544.9 | C | 19.3 |
| DTCM118-268-AL | 268 | 0.034 | 438±6 | 9.0(1/1.8") | 4.6 | >200 | ±381@F11 | <0.1 | <0.1 | 1088±6 | 632.4 | C | - |
| DTCM118-300-AL | 300 | 0.030 | 465±6 | 9.0(1/1.8") | 4.6 | >190 | ±488@F11 | <0.1 | <0.1 | 1106±6 | 623.4 | C | 46.5 |

DTCM118-26



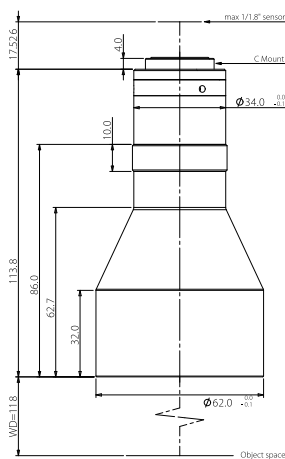
| | |
|-----------------------|---------------------|
| FOV(Φmm) | 26 |
| Mag.(x) | 0.346 |
| WD(mm) | 73±1 |
| Max Sensor Size(Φmm) | 9.0(1/1.8") |
| F/# | 4.6 |
| MTF30(lp/mm) | >170 |
| DOF(mm) | ±3.7@F11 |
| Distortion(% max) | <0.1 |
| Telecentricity(° max) | <0.1 |
| I/O(mm) | 199±1 |
| Length(mm) | 108.2 |
| Mount | C-Mount |
| Weight(kg) | 0.3 |
| Field of View (mmxmm) | |
| 1/1.8" ICX274/687 | 7.16x5.44 20.7x15.7 |
| 1/1.8" EV76C570 | 7.2x5.4 20.8x15.6 |

DTCM118-36



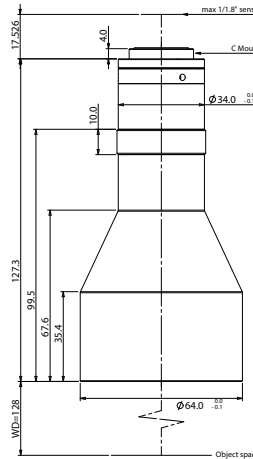
| | |
|-----------------------|---------------------|
| FOV(Φmm) | 36 |
| Mag.(x) | 0.250 |
| WD(mm) | 110±2 |
| Max Sensor Size(Φmm) | 9.0(1/1.8") |
| F/# | 4.6 |
| MTF30(lp/mm) | >180 |
| DOF(mm) | ±7.0@F11 |
| Distortion(% max) | <0.1 |
| Telecentricity(° max) | <0.1 |
| I/O(mm) | 256±2 |
| Length(mm) | 128.3 |
| Mount | C-Mount |
| Weight(kg) | 0.4 |
| Field of View (mmxmm) | |
| 1/1.8" ICX274/687 | 7.16x5.44 28.6x21.8 |
| 1/1.8" EV76C570 | 7.2x5.4 28.8x21.6 |

DTCM118-42



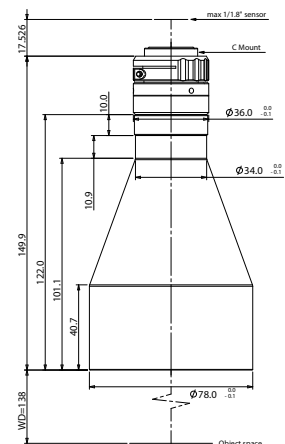
| | |
|-----------------------|---------------------|
| FOV(Φmm) | 42 |
| Mag.(x) | 0.214 |
| WD(mm) | 118±3 |
| Max Sensor Size(Φmm) | 9.0(1/1.8") |
| F/# | 4.6 |
| MTF30(lp/mm) | >195 |
| DOF(mm) | ±9.6@F11 |
| Distortion(% max) | <0.1 |
| Telecentricity(° max) | <0.1 |
| I/O(mm) | 249±3 |
| Length(mm) | 113.8 |
| Mount | C-Mount |
| Weight(kg) | 0.4 |
| Field of View (mmxmm) | |
| 1/1.8" ICX274/687 | 7.16x5.44 33.5x25.4 |
| 1/1.8" EV76C570 | 7.2x5.4 33.6x25.2 |

DTCM118-48



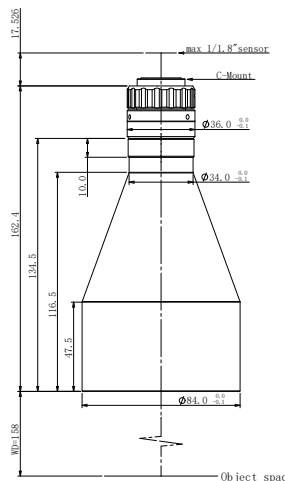
| | |
|-----------------------|---------------------|
| FOV(Φmm) | 48 |
| Mag.(x) | 0.188 |
| WD(mm) | 128±3 |
| Max Sensor Size(Φmm) | 9.0(1/1.8") |
| F/# | 4.6 |
| MTF30(lp/mm) | >190 |
| DOF(mm) | ±12.4@F11 |
| Distortion(% max) | <0.1 |
| Telecentricity(° max) | <0.1 |
| I/O(mm) | 273±3 |
| Length(mm) | 127.3 |
| Mount | C-Mount |
| Weight(kg) | 0.4 |
| Field of View (mmxmm) | |
| 1/1.8" ICX274/687 | 7.16x5.44 38.1x28.9 |
| 1/1.8" EV76C570 | 7.2x5.4 38.3x28.7 |

DTCM118-56-AL



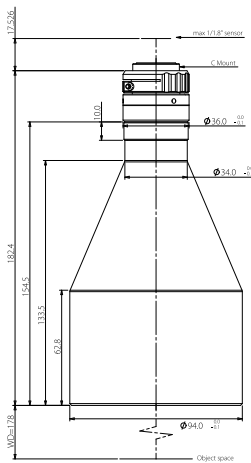
| | |
|-----------------------|---------------------|
| FOV(Φmm) | 56 |
| Mag.(x) | 0.161 |
| WD(mm) | 138±3 |
| Max Sensor Size(Φmm) | 9.0(1/1.8") |
| F/# | 4.6 |
| MTF30(lp/mm) | >190 |
| DOF(mm) | ±17.0@F11 |
| Distortion(% max) | <0.1 |
| Telecentricity(° max) | <0.1 |
| I/O(mm) | 306±3 |
| Length(mm) | 149.9 |
| Mount | C-Mount |
| Weight(kg) | 0.7 |
| Field of View (mmxmm) | |
| 1/1.8" ICX274/687 | 7.16x5.44 44.5x33.8 |
| 1/1.8" EV76C570 | 7.2x5.4 44.7x33.5 |

DTCM118-64H-AL



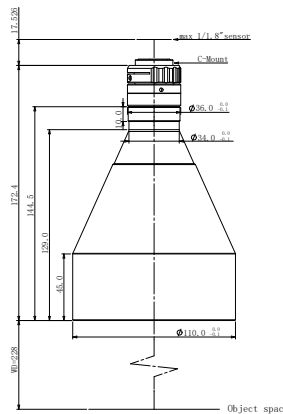
| | |
|-----------------------|---------------------|
| FOV(Φmm) | 64 |
| Mag.(x) | 0.141 |
| WD(mm) | 158±3 |
| Max Sensor Size(Φmm) | 9.0(1/1.8") |
| F/# | 4.6 |
| MTF30(lp/mm) | >195 |
| DOF(mm) | ±22.3@F11 |
| Distortion(% max) | <0.1 |
| Telecentricity(° max) | <0.1 |
| I/O(mm) | 338±3 |
| Length(mm) | 162.4 |
| Mount | C-Mount |
| Weight(kg) | 0.8 |
| Field of View (mmxmm) | |
| 1/1.8" ICX274/687 | 7.16x5.44 50.8x38.6 |
| 1/1.8" EV76C570 | 7.2x5.4 51.1x38.3 |

DTCM118-72-AL



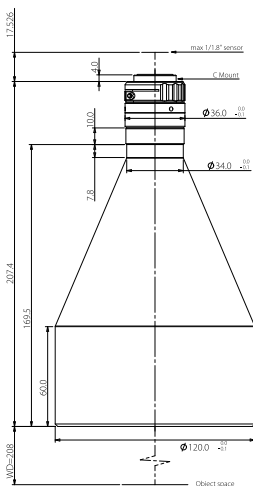
| | |
|-----------------------|---------------------|
| FOV(Φmm) | 72 |
| Mag.(x) | 0.125 |
| WD(mm) | 178±3 |
| Max Sensor Size(Φmm) | 9.0(1/1.8") |
| F/# | 4.6 |
| MTF30(lp/mm) | >195 |
| DOF(mm) | ±28.1@F11 |
| Distortion(% max) | <0.1 |
| Telecentricity(° max) | <0.1 |
| I/O(mm) | 378±3 |
| Length(mm) | 182.4 |
| Mount | C-Mount |
| Weight(kg) | 1.0 |
| Field of View (mmxmm) | |
| 1/1.8" ICX274/687 | 7.16x5.44 57.3x43.5 |
| 1/1.8" EV76C570 | 7.2x5.4 57.6x43.2 |

DTCM118-80H-AL



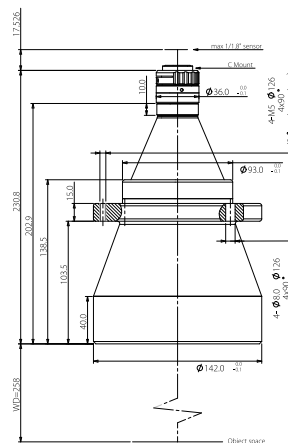
| | |
|-----------------------|---------------------|
| FOV(Φmm) | 80 |
| Mag.(x) | 0.113 |
| WD(mm) | 228±4 |
| Max Sensor Size(Φmm) | 9.0(1/1.8") |
| F/# | 4.6 |
| MTF30(lp/mm) | >195 |
| DOF(mm) | ±34.8@F11 |
| Distortion(% max) | <0.1 |
| Telecentricity(° max) | <0.1 |
| I/O(mm) | 418±4 |
| Length(mm) | 172.4 |
| Mount | C-Mount |
| Weight(kg) | 1.9 |
| Field of View (mmxmm) | |
| 1/1.8" ICX274/687 | 7.16x5.44 63.4x48.1 |
| 1/1.8" EV76C570 | 7.2x5.4 63.7x47.8 |

DTCM118-90-AL



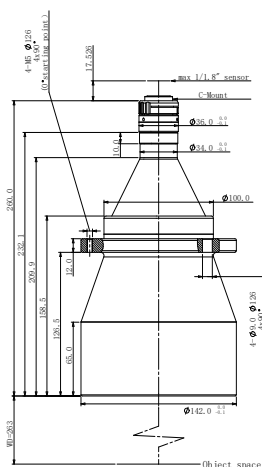
| | |
|-----------------------|---------------------|
| FOV(Φmm) | 90 |
| Mag.(x) | 0.100 |
| WD(mm) | 208±3 |
| Max Sensor Size(Φmm) | 9.0(1/1.8") |
| F/# | 4.6 |
| MTF30(lp/mm) | >195 |
| DOF(mm) | ±44@F11 |
| Distortion(% max) | <0.1 |
| Telecentricity(° max) | <0.1 |
| I/O(mm) | 433±3 |
| Length(mm) | 207.4 |
| Mount | C-Mount |
| Weight(kg) | 1.7 |
| Field of View (mmxmm) | |
| 1/1.8" ICX274/687 | 7.16x5.44 71.6x54.4 |
| 1/1.8" EV76C570 | 7.2x5.4 72.0x54.0 |

DTCM118-100-AL



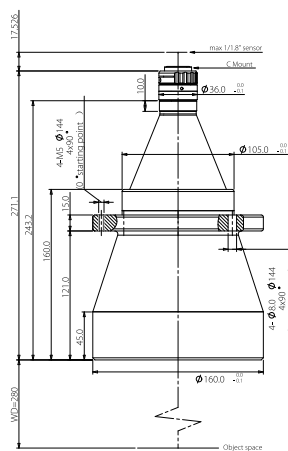
| | |
|-----------------------|---------------------|
| FOV(Φmm) | 100 |
| Mag.(x) | 0.090 |
| WD(mm) | 258±4 |
| Max Sensor Size(Φmm) | 9.0(1/1.8") |
| F/# | 4.6 |
| MTF30(lp/mm) | >190 |
| DOF(mm) | ±54.3@F11 |
| Distortion(% max) | <0.1 |
| Telecentricity(° max) | <0.1 |
| I/O(mm) | 506±4 |
| Length(mm) | 230.8 |
| Mount | C-Mount |
| Weight(kg) | 3.0 |
| Field of View (mmxmm) | |
| 1/1.8" ICX274/687 | 7.16x5.44 79.6x60.4 |
| 1/1.8" EV76C570 | 7.2x5.4 80.0x60.0 |

DTCM118-110-AL



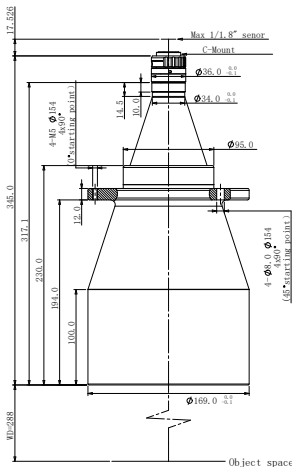
| | |
|-----------------------|---------------------|
| FOV(Φmm) | 110 |
| Mag.(x) | 0.082 |
| WD(mm) | 263±4 |
| Max Sensor Size(Φmm) | 9.0(1/1.8") |
| F/# | 4.6 |
| MTF30(lp/mm) | >200 |
| DOF(mm) | ±65.4@F11 |
| Distortion(% max) | <0.1 |
| Telecentricity(° max) | <0.1 |
| I/O(mm) | 541±4 |
| Length(mm) | 260.0 |
| Mount | C-Mount |
| Weight(kg) | 2.7 |
| Field of View (mmxmm) | |
| 1/1.8" ICX274/687 | 7.16x5.44 87.3x66.3 |
| 1/1.8" EV76C570 | 7.2x5.4 87.8x65.9 |

DTCM118-120-AL



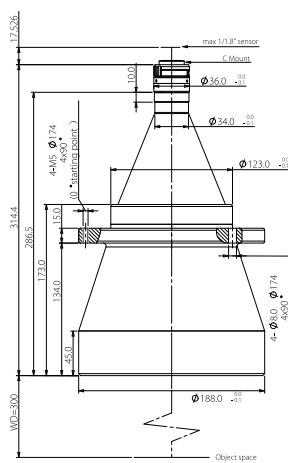
| | |
|-----------------------|---------------------|
| FOV(Φmm) | 120 |
| Mag.(x) | 0.075 |
| WD(mm) | 280±5 |
| Max Sensor Size(Φmm) | 9.0(1/1.8") |
| F/# | 4.6 |
| MTF30(lp/mm) | >190 |
| DOF(mm) | ±78.2@F11 |
| Distortion(% max) | <0.1 |
| Telecentricity(° max) | <0.1 |
| I/O(mm) | 569±5 |
| Length(mm) | 271.1 |
| Mount | C-Mount |
| Weight(kg) | 4.2 |
| Field of View (mmxmm) | |
| 1/1.8" ICX274/687 | 7.16x5.44 95.5x72.5 |
| 1/1.8" EV76C570 | 7.2x5.4 96.0x72.0 |

DTCM118-136-AL



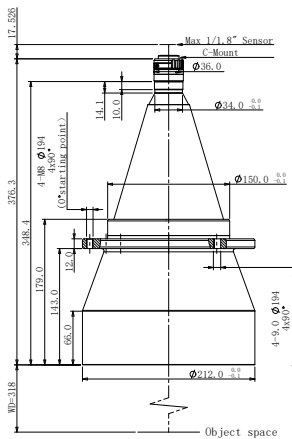
| | |
|-----------------------|----------------------|
| FOV(Φmm) | 136 |
| Mag.(x) | 0.066 |
| WD(mm) | 288±5 |
| Max Sensor Size(Φmm) | 9.0(1/1.8") |
| F/# | 4.6 |
| MTF30(lp/mm) | >200 |
| DOF(mm) | ±101@F11 |
| Distortion(% max) | <0.1 |
| Telecentricity(° max) | <0.1 |
| I/O(mm) | 651±5 |
| Length(mm) | 345.0 |
| Mount | C-Mount |
| Weight(kg) | - |
| Field of View (mmxmm) | |
| 1/1.8" ICX274/687 | 7.16x5.44 108.5x82.4 |
| 1/1.8" EV76C570 | 7.2x5.4 109.1x81.8 |

DTCM118-150-AL



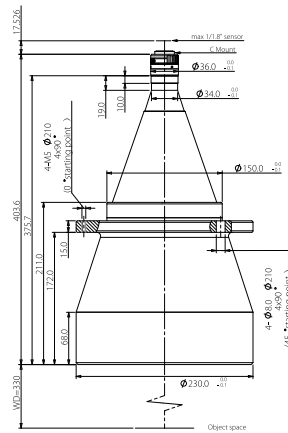
| | |
|-----------------------|----------------------|
| FOV(Φmm) | 150 |
| Mag.(x) | 0.060 |
| WD(mm) | 300±5 |
| Max Sensor Size(Φmm) | 9.0(1/1.8") |
| F/# | 4.6 |
| MTF30(lp/mm) | >195 |
| DOF(mm) | ±122@F11 |
| Distortion(% max) | <0.1 |
| Telecentricity(° max) | <0.1 |
| I/O(mm) | 632±5 |
| Length(mm) | 314.4 |
| Mount | C-Mount |
| Weight(kg) | 5.7 |
| Field of View (mmxmm) | |
| 1/1.8" ICX274/687 | 7.16x5.44 119.3x90.7 |
| 1/1.8" EV76C570 | 7.2x5.4 120.0x90.0 |

DTCM118-170-AL



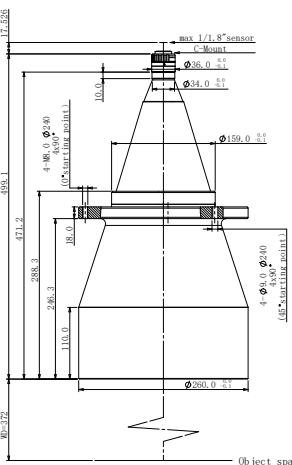
| | |
|-----------------------|-----------------------|
| FOV(Φmm) | 170 |
| Mag.(x) | 0.053 |
| WD(mm) | 318±5 |
| Max Sensor Size(Φmm) | 9.0(1/1.8") |
| F/# | 4.6 |
| MTF30(lp/mm) | >200 |
| DOF(mm) | ±157@F11 |
| Distortion(% max) | <0.1 |
| Telecentricity(° max) | <0.1 |
| I/O(mm) | 712±5 |
| Length(mm) | 376.3 |
| Mount | C-Mount |
| Weight(kg) | 6.5 |
| Field of View (mmxmm) | |
| 1/1.8" ICX274/687 | 7.16x5.44 135.1x102.6 |
| 1/1.8" EV76C570 | 7.2x5.4 135.8x101.9 |

DTCM118-190-AL

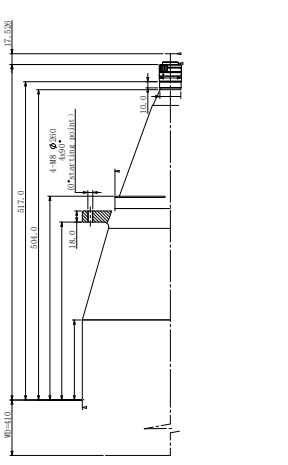


| | |
|-----------------------|-----------------------|
| FOV(Φmm) | 190 |
| Mag.(x) | 0.047 |
| WD(mm) | 330±5 |
| Max Sensor Size(Φmm) | 9.0(1/1.8") |
| F/# | 4.6 |
| MTF30(lp/mm) | >195 |
| DOF(mm) | ±199@F11 |
| Distortion(% max) | <0.1 |
| Telecentricity(° max) | <0.1 |
| I/O(mm) | 751±5 |
| Length(mm) | 403.6 |
| Mount | C-Mount |
| Weight(kg) | 11.0 |
| Field of View (mmxmm) | |
| 1/1.8" ICX274/687 | 7.16x5.44 152.3x115.7 |
| 1/1.8" EV76C570 | 7.2x5.4 153.2x114.9 |

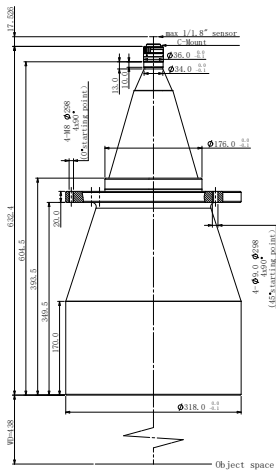
DTCM118-216-AL



| | |
|-----------------------|-----------------------|
| FOV(Φmm) | 216 |
| Mag.(x) | 0.042 |
| WD(mm) | 372±5 |
| Max Sensor Size(Φmm) | 9.0(1/1.8") |
| F/# | 4.6 |
| MTF30(lp/mm) | >200 |
| DOF(mm) | ±249@F11 |
| Distortion(% max) | <0.1 |
| Telecentricity(° max) | <0.1 |
| I/O(mm) | 889±5 |
| Length(mm) | 499.1 |
| Mount | C-Mount |
| Weight(kg) | 13.7 |
| Field of View (mmxmm) | |
| 1/1.8" ICX274/687 | 7.16x5.44 170.5x129.5 |
| 1/1.8" EV76C570 | 7.2x5.4 171.4x128.6 |

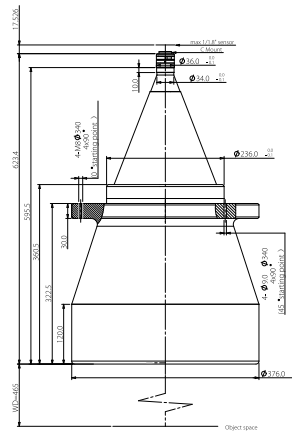


DTCM118-268-AL



| | |
|-----------------------|-----------------------|
| FOV(Φmm) | 268 |
| Mag.(x) | 0.034 |
| WD(mm) | 438±6 |
| Max Sensor Size(Φmm) | 9.0(1/1.8") |
| F/# | 4.6 |
| MTF30(lp/mm) | >200 |
| DOF(mm) | ±381@F11 |
| Distortion(% max) | <0.1 |
| Telecentricity(° max) | <0.1 |
| I/O(mm) | 1088±6 |
| Length(mm) | 632.4 |
| Mount | C-Mount |
| Weight(kg) | - |
| Field of View (mmxmm) | |
| 1/1.8" ICX274/687 | 7.16x5.44 210.6x160.0 |
| 1/1.8" EV76C570 | 7.2x5.4 211.8x158.8 |

DTCM118-300-AL



| | |
|-----------------------|-----------------------|
| FOV(Φmm) | 300 |
| Mag.(x) | 0.030 |
| WD(mm) | 465±6 |
| Max Sensor Size(Φmm) | 9.0(1/1.8") |
| F/# | 4.6 |
| MTF30(lp/mm) | >190 |
| DOF(mm) | ±488@F11 |
| Distortion(% max) | <0.1 |
| Telecentricity(° max) | <0.1 |
| I/O(mm) | 1106±6 |
| Length(mm) | 623.4 |
| Mount | C-Mount |
| Weight(kg) | 46.5 |
| Field of View (mmxmm) | |
| 1/1.8" ICX274/687 | 7.16x5.44 238.7x181.3 |
| 1/1.8" EV76C570 | 7.2x5.4 240.0x180.0 |