

LINEAR LIGHT

MLL14 Series



ELECTRICAL:

Input Voltage: See LDM350/2 spec
 Input Current: See LDM350/2 spec
 Connector: Quick Connect, 5 pin Reverse Key Euro / Micro

WARNING !!!

**Use Only Spectrum Illumination LDM Driver with Monster Lights.
 Do Not Connect Monster Lights Directly to 24VDC!**

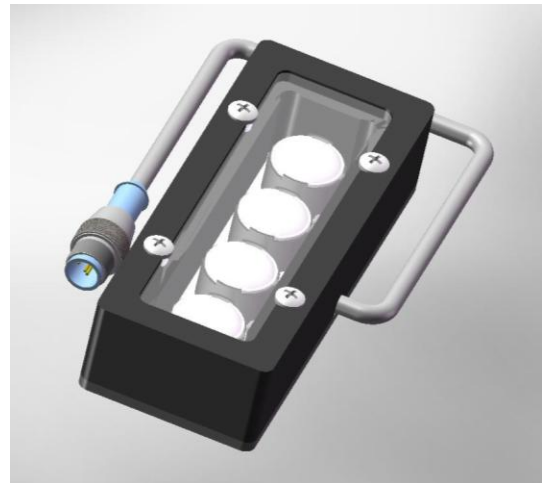
MECHANICAL:

Driver: DIN Rail Mount
 Dimensions: <http://www.spectrumillumination.com>

ILLUMINATION:

Light Source: LED – 6 Colors, UV & IR
 Quantity HB LED's: 4
 Light Emitting Pattern: 1" x 4" / 25mm x 100mm
 LED Life: up to 100,000 hours*.
 *Contact us for LED life information

PART NUMBER DESIGNATION: MLL14-XXX
 XXX = Light Color - 470, 505, 530, 590, 630, WHI,
 365, 395, 850 & 940



Color	Dash #	λ Dominant Typical	λ Dominant Range	Spectral Half-width $\Delta\lambda_{1/2}$	λ Peak Typical	Units
Infrared	-940	935	n/a	45	940	nm
Infrared	-850	845	n/a	40	850	nm
Red	-630	625	620 - 650	20	638	nm
Amber	-590	590	584 - 598	14	592	nm
Green	-530	530	519 - 561	35	522	nm
Cyan	-505	505	489 - 521	30	503	nm
Blue	-470	470	459 - 491	25	464	nm
Ultra Violet	-395	395	390 - 410	n/a	n/a	nm
Ultra Violet	-365	365	n/a	8	365	nm
White	-WHI	Color Temp 5700 - 7000K				



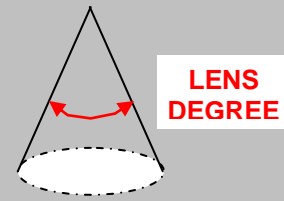
Light includes LDM DIN rail mount constant current driver and 4-meter cable (driver is available with variable or 0-10VDC intensity control - cable also available in 8, 15 and 30-meter lengths)

Monster Lights have changeable lenses for matching the area of illumination with the working distance



Monster Lenses - P/N MLL14-XXX/XX

- 12° Narrow (Standard)
- /30 – 30° Medium Angle
- /50 – 50° Medium Angle
- /F – ~70° Wide Angle
- /L – 25° x 6° Angle



*** UV lights are available with 60 degree reflectors only ***

Rev. Date: 2009-05-28