

# LINEAR LIGHT

## LL128.75 Series



**ELECTRICAL:**

Input Voltage: See LDM1750 spec  
 Input Current: See LDM1750 spec  
 Connector: Quick Connect, 5 pin Reverse Key Euro / Micro

**WARNING !!!**

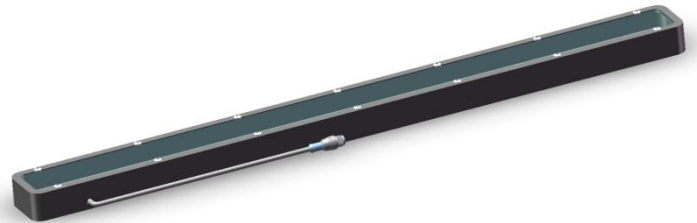
**Use Only Spectrum Illumination LDM Driver with Monster Lights.  
 Do Not Connect Monster Lights Directly to 24VDC!**

**MECHANICAL:**

Driver: DIN Rail Mount  
 Dimensions: <http://www.spectrumillumination.com>

**ILLUMINATION:**

Light Source: LED – 6 Colors, UV & IR  
 Quantity HB LED's: 30  
 Light Emitting Pattern: 28.75" / 730mm  
 LED Life: up to 100,000 hours\*.  
 \*Contact us for LED life information



**PART NUMBER DESIGNATION: LL128.75-XXX**

XXX = Light Color - 470, 505, 530, 590, 630, WHI, 365, 395, 850 & 940

Color	Dash #	$\lambda$ Dominant Typical	$\lambda$ Dominant Range	Spectral Half-width $\Delta\lambda_{1/2}$	$\lambda$ Peak Typical	Units
Infrared	-940	935	n/a	45	940	nm
Infrared	-850	845	n/a	40	850	nm
Red	-630	625	620 - 650	20	638	nm
Amber	-590	590	584 - 598	14	592	nm
Green	-530	530	519 - 561	35	522	nm
Cyan	-505	505	489 - 521	30	503	nm
Blue	-470	470	459 - 491	25	464	nm
Ultra Violet	-395	395	390 - 410	n/a	n/a	nm
Ultra Violet	-365	365	n/a	8	365	nm
White	-WHI	Color Temp 5700 - 7000K				



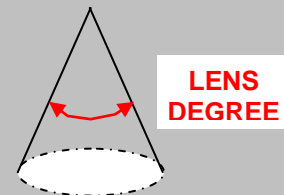
Light includes LDM DIN rail mount constant current driver and 4-meter cable (driver is available with variable or 0-10VDC intensity control - cable also available in 8, 15 and 30-meter lengths)

Monster Lights have changeable lenses for matching the area of illumination with the working distance



Monster Lenses - P/N LL128.75-XXX/XX

- 12° Narrow (Standard)
- /30 – 30° Medium Angle
- /50 – 50° Medium Angle
- /F – ~70° Wide Angle
- /L – 25° x 6° Angle



\*\*\* UV lights are available with 60 degree reflectors only \*\*\*

Rev. Date: 2012-11-21