



Universal Input Adapter, 158 320

Part No.	Description
158 320	Universal Input Adapter

## Universal Input Adapter

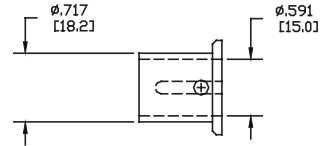
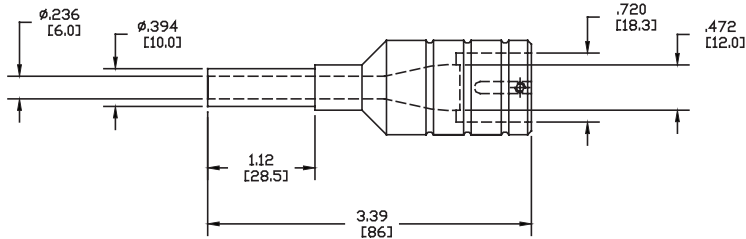
For SCHOTT KL Series Light Sources

### Features

- Universal input adapter to fit lightguides from alternative series into SCHOTT KL 1500 LCD and KL 2500 LCD light sources.
- Universal input adapter contains a SCHOTT fiber optic cone type FSK. This optical element widens the light beam at the entrance of the adapter from 9 mm to 13 mm at the exit, which accommodates larger bundle sizes.
- Attaches to light guide by means of a set screw.
- Metal ferrule inside of the adapter allows usage of Volpi or Photonic light guides.
- Adapter without metal ferrule allows usage of any SCHOTT DCR or ACE lightguide.
- If a Backlight (refer to "COLD Vision" Series) is being used, the heat filter and holder at the end of the light guide should be carefully removed and replaced by the SCHOTT adapter. Please note that the Backlight should not be used without either the standard heat filter or the SCHOTT input adapter, due to irreversible damage of the plastic fibers.
- Manufactured in the EU.

Product improvements may result in specification or feature changes without notice.

# Universal Input Adapter



Fiber Optics  
**SCHOTT AG**  
Otto-Schott-Strasse 2  
55127 Mainz  
Germany

Phone +49 (0)6131/66-7796  
Fax +49 (0)6131/66-7850  
fiberoptics.info@schott.com  
www.schott.com/fiberoptics

For your local sales contact please visit  
[www.schott.com/fiberoptics/english/contact](http://www.schott.com/fiberoptics/english/contact)

**SCHOTT**  
glass made of ideas