



Monster-Series Ring “Bright Field” Lights

Spectrum Illumination’s Monster-Series Ring “Bright Field” Lights are designed for bright field applications that require a large area of coverage and/or long work distance.

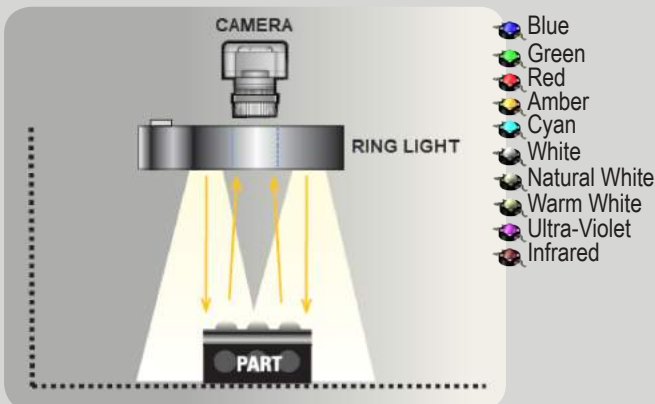


Units come with light, driver(s) / controller(s) and cable.

Series Highlights

- External driver/controller included
- HS (High Speed) Strobe Technology
- High Power LED’s (24 VDC)
- M12 connector for quick disconnect
- Available in 8 colors, Ultra-Violet, and Infrared
- Available in 7 sizes
- 10 Year Warranty* - 100,000 hours

Units come with light, driver(s) / controller(s) and cable.



Application Examples

- Defects on surfaces
- Food and Beverage
- Homogeneous / direct lighting
- Inspection of assembly
- OCR
- Part recognition
- Pharmaceutical
- Print control

*10-Year warranty on registered products
 *6-Year warranty on non-registered products
 *3-year warranty on washdown lights
 spectrumillumination/limited-warranty/

Case Study - Product Application



Bolt Coating Inspection

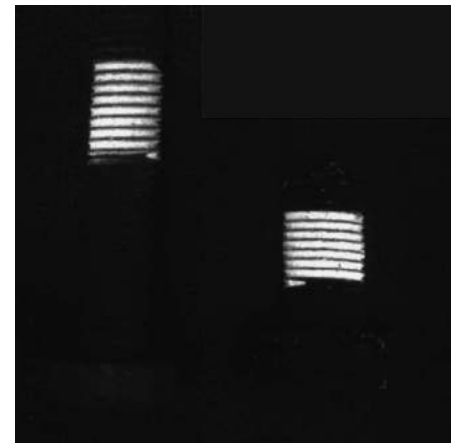
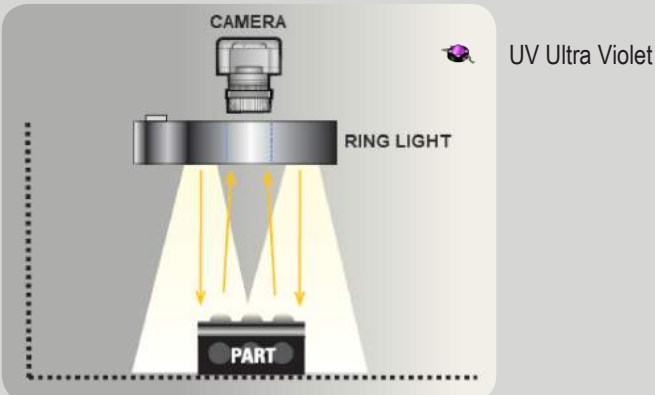


Solution: MRL5.5 - 365 UV, 100ms Shutter Speed, with Camera UV Blocker.



Bolts with Resin Coating Applied.

Illumination - Inspection Setup



Bolt inspection with MRL5.5 365 UV Ring Light.

Vision & Automation Opportunity:

Automotive, Aerospace and Industrial environments count on 100% compliance when it comes to safety. Bolts must be coated to remain secure. Bolts without coating must be rejected before entering production and shipping process. Production speed must be maintained while identifying rejected materials.

Vision & Automation Solution:

SI Engineering Lab mocked up the opportunity. SI Engineer applied LED lens Optic types, camera lenses and product positioning to develop repeatable quality testing solution. Spectrum Illumination's MRL5.5-365 UV Ring Light, UV blocker camera lens with 100ms shutter speed. Smart camera verifies bolts have coating applied.

Case Study - Product Application



Bottle Seal Inspection

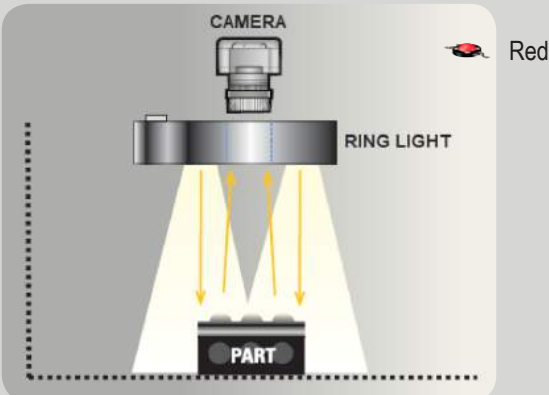


Solution: MRL5.5 - 630 Red, (Backlight Option) 16 mm lens, 15ms shutter speed, light 3" from target.



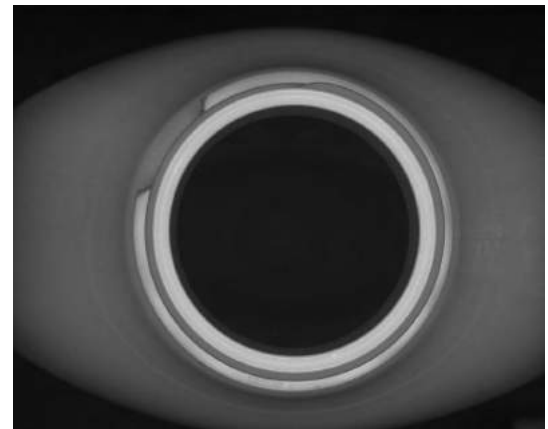
Sealed Mustard Bottle.

Illumination - Inspection Setup



Vision & Automation Opportunity:

Customer's bottling process required product inspection before filling. Seal surface defects cause product failure and product line down time. Defective bottles must be rejected before entering automated filling process. Production speed must be maintained while identifying rejected materials.



Seal inspection with MRL5.5 630 Red Ring Light.

Vision & Automation Solution:

SI Engineering Lab mocked up the opportunity. SI Engineer applied LED lens Optic types, camera lenses and product positioning to develop repeatable quality testing solution. Spectrum Illumination's MRL5.5-630 Red Ring Light, backlight option with no LED lens and white diffuser, 16 mm camera lens, 15ms shutter speed, light 3" from target. Smart camera identifies seal defects in bottle.



Standard-Series Ring “Bright Field” Lights

Spectrum Illumination’s Standard-Series Ring “Bright Field” Lights are designed for bright field and dark field applications. Dark field lights are used to illuminate edges and surface defects. The 4 arrays on the RL/DF Ring Lights are adjustable, it can be adjusted from 0 – 90 degrees so that edges and features are illuminated properly.

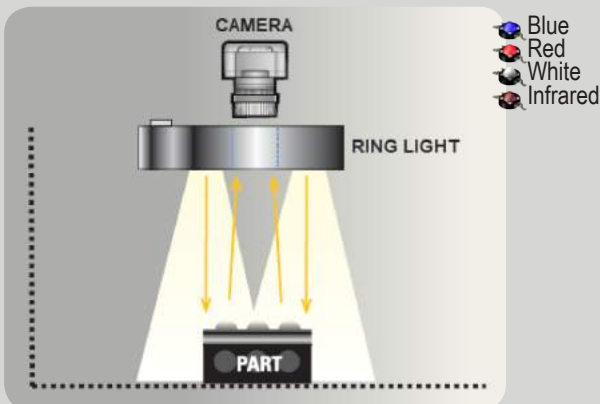


Units come with light and cable.

Series Highlights

- No driver/controller required
- HS (High Speed) Strobe Technology
- 24 VDC
- M12 connector for quick disconnect
- Available in 2-3 colors, Ultra-Violet, and Infrared
- Available in 4 sizes
- 10 Year Warranty* - 100,000 hours

Units come with light and cable.



- *10-Year warranty on registered products
- *6-Year warranty on non-registered products
- *3-year warranty on washdown lights
spectrumillumination/limited-warranty/

Application Examples

- Defects on surfaces
- Food and Beverage
- Homogeneous / direct lighting
- Inspection of assembly
- OCR
- Part recognition
- Pharmaceutical
- Print control