



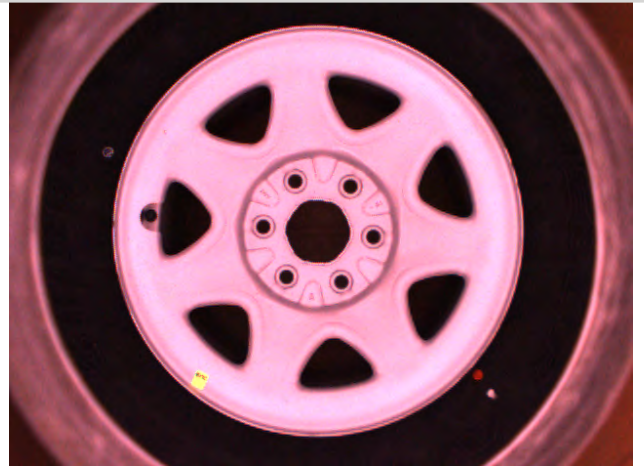
## Case Study - Product Application



### Tire - Wheel Inspection



Solution: DL29.25 - WHI  
1.5ms Shutter Speed, red gain boost w/Color Camera.

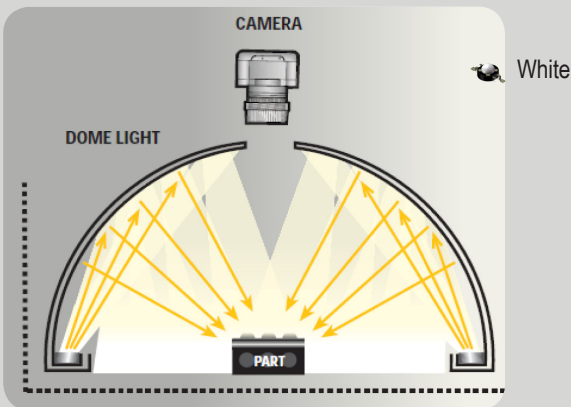


Aluminum Wheel with Red and Yellow Marks



Chrome Wheel with Red and Yellow Marks

#### Illumination - Inspection Setup



#### Vision & Automation Opportunity:

Customer's tire and wheel inspection wanted a solution to identify & verify key markings on the tire. Production speed must be maintained while enhancing the quality inspection process to maintain product margins and reduce product failure liability.

#### Vision & Automation Solution:

SI Engineering Lab mocked up the opportunity. SI Engineer applied light colors, camera lenses and product positioning to develop repeatable quality testing solution. Spectrum Illumination's DL29.25 Dome Light in White, color camera 1.5ms shutter speed with red gain boost. Smart camera identifies tire markings on both Chrome and Aluminum wheels.

Find Pattern Tool	PASS
Find Color Tool	PASS
Verify color	PASS



POLYTEC GmbH  
Tel: +49 (72 43) 604 174 0

Polytec-Platz 1 - 7  
Fax: +49 (72 43) 6 99 44

D -76337 Waldbronn  
E-Mail: ot@polytec.de

GERMANY  
www.polytec.de