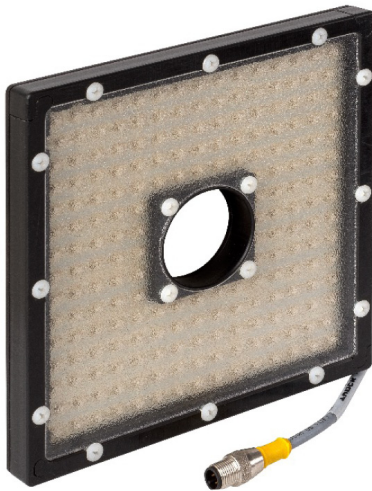




Case Study - Product Application



Syringe Inspection

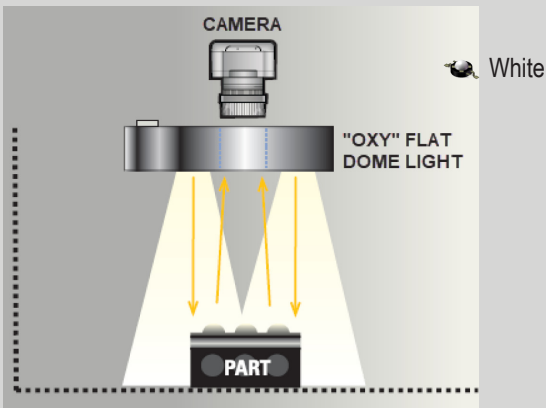


Solution: OL66 - WHI, 16 mm lens, light 4.5" from target.



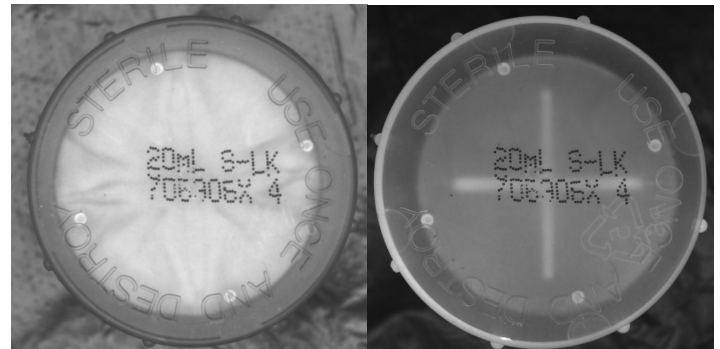
Syringe Device.

Illumination - Inspection Setup



Vision & Automation Opportunity:

Customer required the ability to inspect syringe tops for part number. The plunger is grey and natural. Inspection process must be able to identify text under both conditions. Parts with missing text must be rejected. Production speed must be maintained while identifying part text.



Syringe top with OL66-Whi "Oxy" Flat Dome Light.

Vision & Automation Solution:

SI Engineering Lab mocked up the opportunity. SI Engineer applied LED lens Optic types, camera lenses and product positioning to develop repeatable quality testing solution. Spectrum Illumination's OL66-Whi "Oxy" Flat Dome Light, .16m camera lens, light 4.5" from target. Smart camera identifies text numbers on syringe tops mounted on both grey and natural colored plunger.