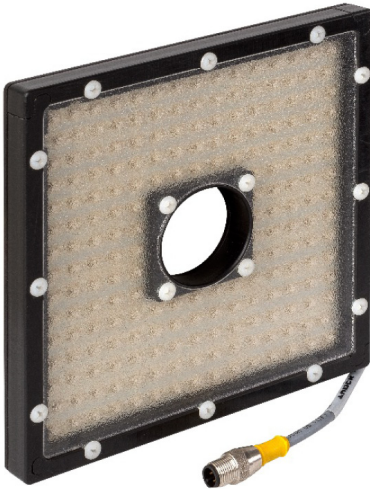




Case Study - Product Application

Stamp Metal Part Inspection



Solution: OL66 - WHI, 25 mm lens, .8ms shutter speed, light 1.188" from target.

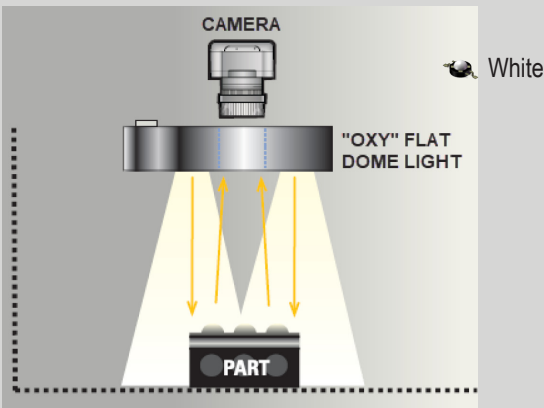


Stamping process.



Part inspection with OL66-WHI Oxy Flat Dome Light.

Illumination - Inspection Setup



Vision & Automation Opportunity:

Metal stamping process required product inspection. Printed text area is flat, medium tapered or full tapered. Inspection process must be able to identify text under all three conditions. Parts with missing id text must be rejected. Production speed must be maintained while identifying part text.

Vision & Automation Solution:

SI Engineering Lab mocked up the opportunity. SI Engineer applied LED lens Optic types, camera lenses and product positioning to develop repeatable quality testing solution. Spectrum Illumination's OL66-WHI "Oxy" Flat Dome Light, .25 mm camera lens, .8ms shutter speed, light 1.188" from target. Smart camera identifies text & numbers on stamped part.



POLYTEC GmbH
Tel: +49 (72 43) 604 174 0

Polytec-Platz 1 - 7
Fax: +49 (72 43) 6 99 44

D -76337 Waldbronn
E-Mail: ot@polytec.de

GERMANY
www.polytec.de